



PARKING RATE RECOMMENDATIONS

Terence Hsiao Co-Chair CSTF
Tony Guerrero Co-Chair CSTF



EST. 2010

COMMUTER SERVICES TASK FORCE

Cascadia Members

- Steve Yramategui (Faculty)
- Darla Hart (Classified Staff)
- Glenn Colby (Exempt Staff)
- Atlas Turner (Student)
- Cassie Rodolph (Student)
- Terence Hsiao (Co-Chair)

UW Bothell Members

- Bill Erdly (Faculty)
- Shugla Kakar (Student)
- Cham Kao (Exempt Staff)
- Kelly Snyder (Exempt Staff)
- Nicole Sanderson (Classified Staff)
- Tony Guerrero (Co-Chair)

Commuter Services Support

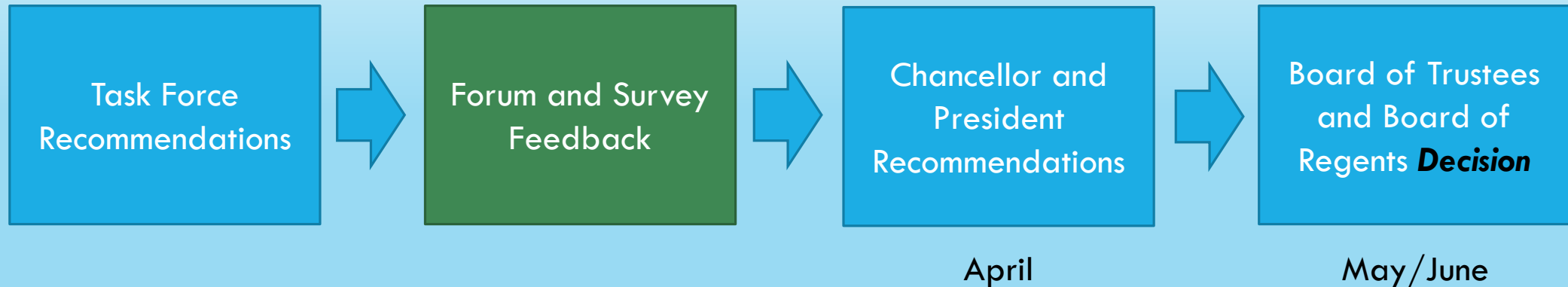
- Christian Adams (Finance)
- Alessandra Bulzomi (Finance)
- Daniele Raymond (Parking Supv)
- Chelsea Elmer (Program Asst.)

Meetings

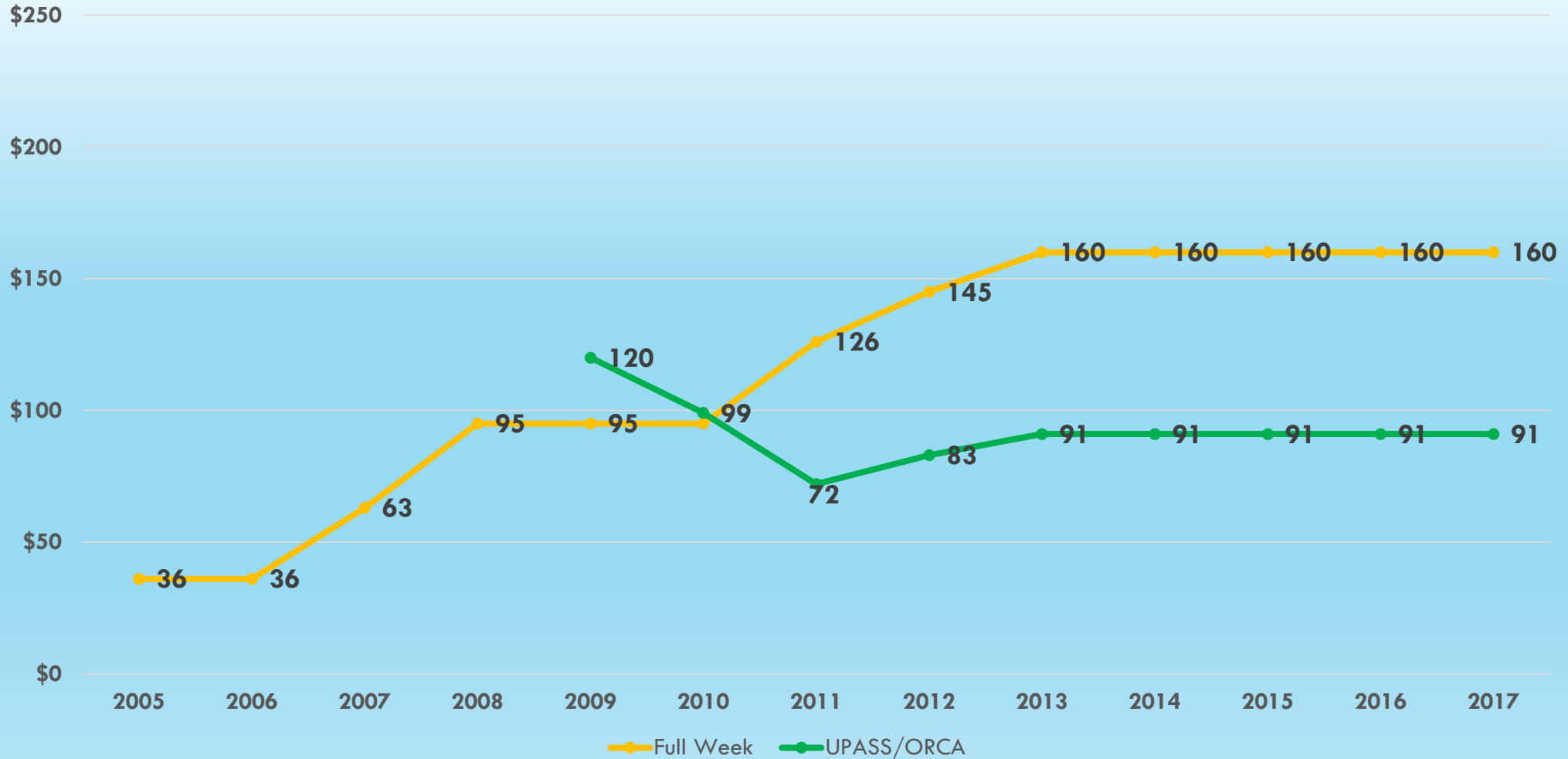
6 meetings during Fall and Winter

Provide broad representation reviewing parking and transportation policies that affect the campus community.

THE DECISION-MAKING PROCESS



5 YEARS WITHOUT A RATE INCREASE



COMMUTER SERVICES FACTS

The State of Washington expects parking expenses, including parking facilities, to be paid by user fees. **We need to collect more fees to fund more parking.**

Garage parking costs \$35,000 to \$41,000 *per space* to build.

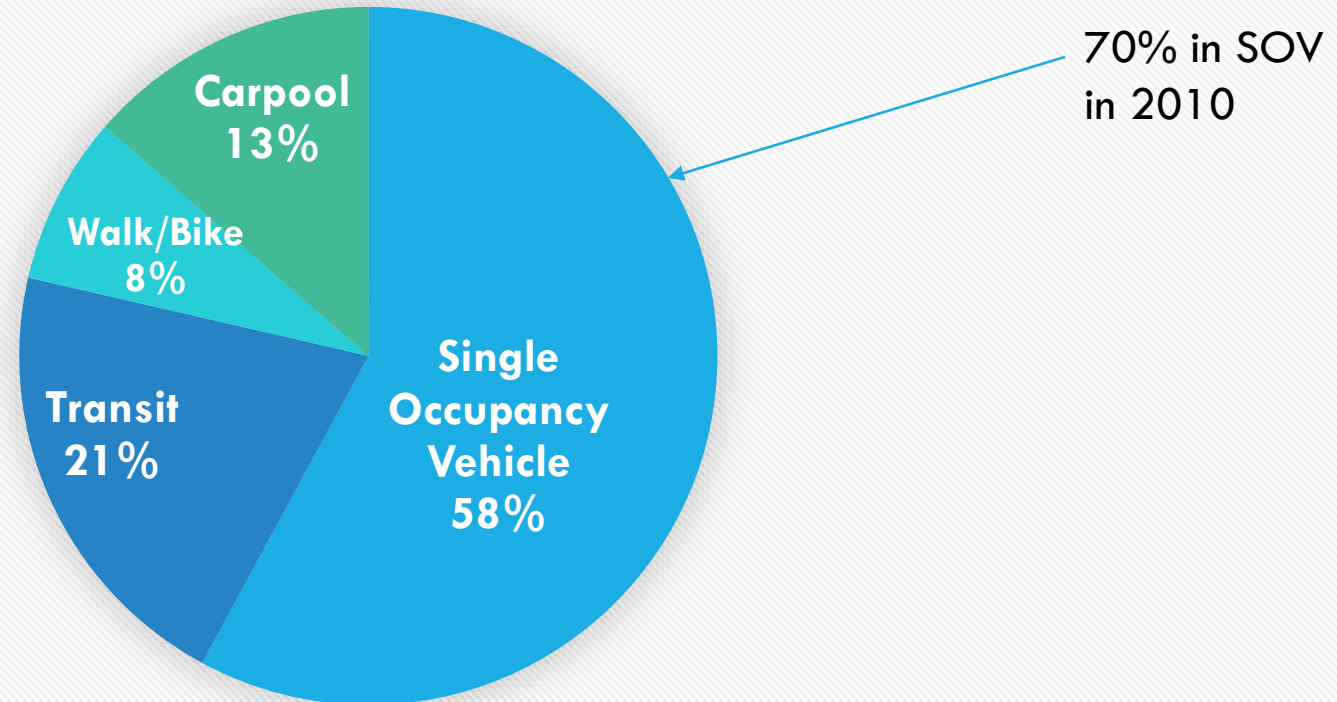
Last year, *one* garage parking space cost \$190 to operate and maintain.

The UPASS/ORCA are subsidized to encourage use of alternative transportation. The subsidy is approximately \$500,000 a year and is also funded by parking fee revenues.

Transit agency budget cuts have reduced the amount of buses through our campus by 38% since 2014.

FALL 2016 COMMUTING SURVEY

UWB / CC Commute Mode



Sources: Transpo Group Survey, Fall 2016, CTR Survey 2010

COMMUNITY TRANSIT RECOGNITION

2016 Innovation and Revitalization Champion Award

In recognition of outstanding contributions to
Commute Trip Reduction in Snohomish County

March 30, 2017

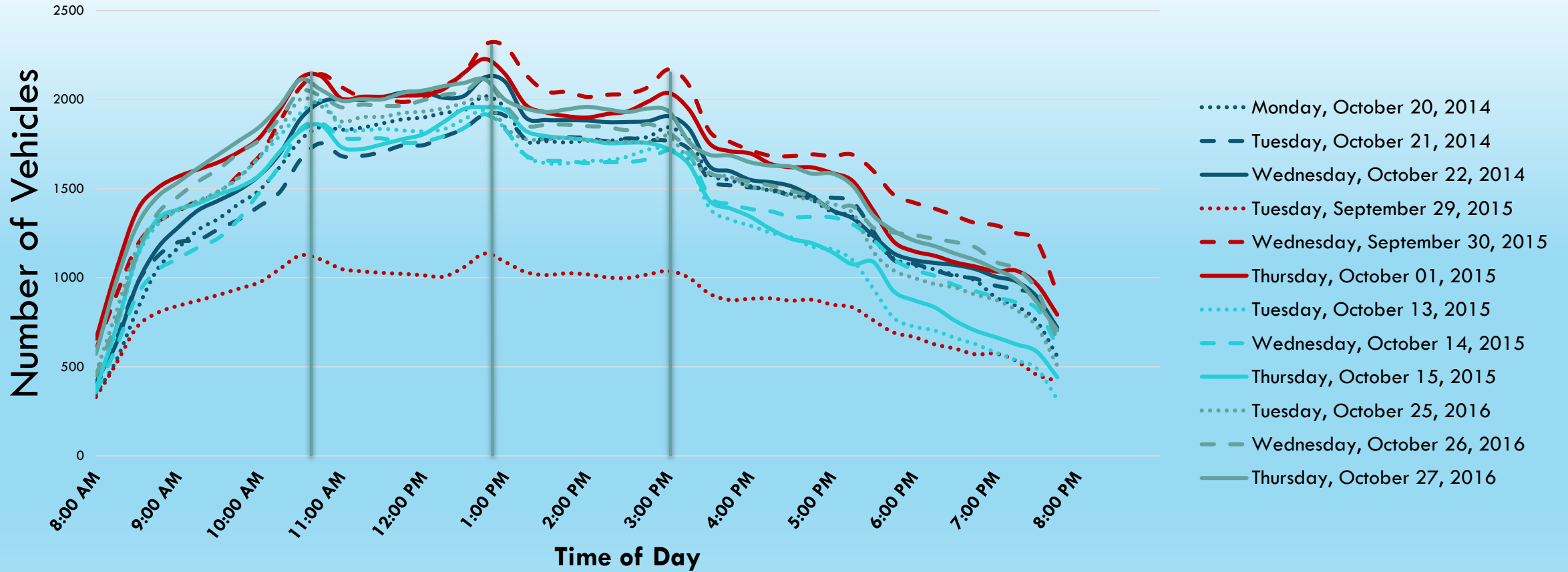
One of five recognized out of 69 companies

Choice ●●●●
Connections
Innovative Transportation Programs

2016 Choice Connections Awards Luncheon



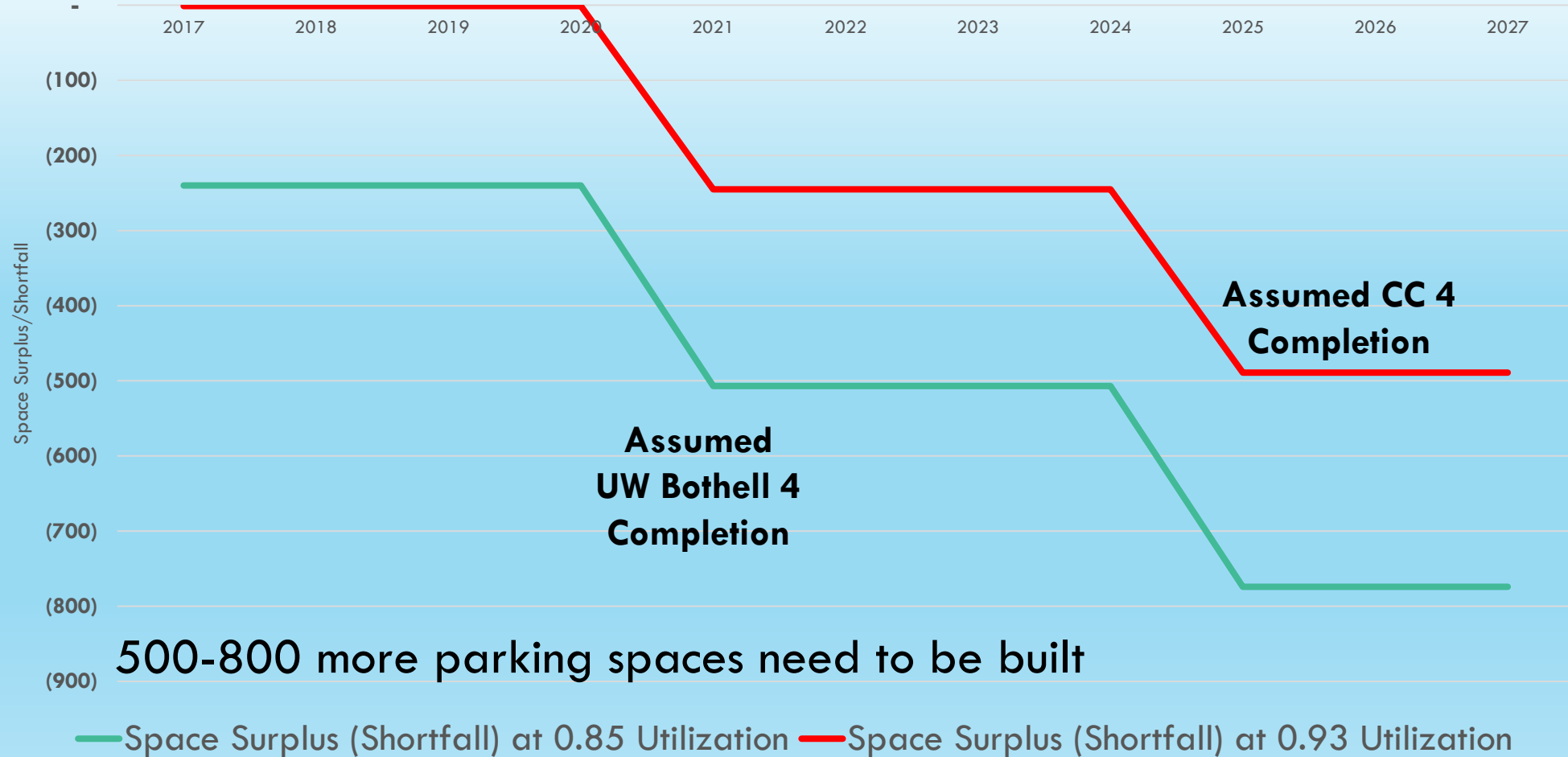
CAMPUS PARKING LOTS ARE FULL



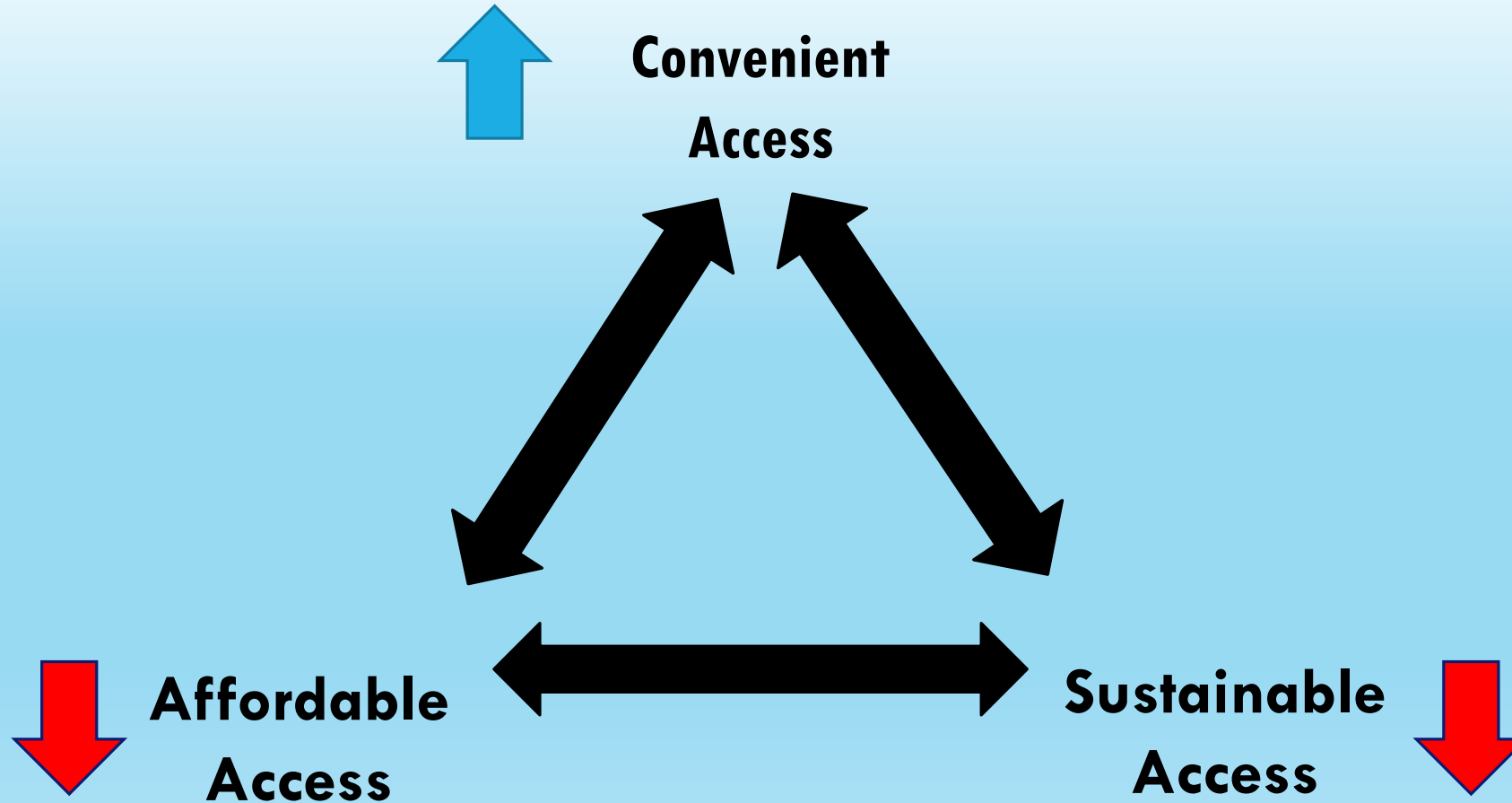
CSTF CONSIDERED THE FOLLOWING OPTIONS

- Prioritize **Convenience** – Provide ideal parking access, 85% utilization goal
- Prioritize **Affordability**– Hold rate increases, to the absolute minimum, accept *status quo* frustration, 93% utilization
- **Balance Priorities** – Stay above water, improve parking access, restrain parking rate increases, 87% utilization goal

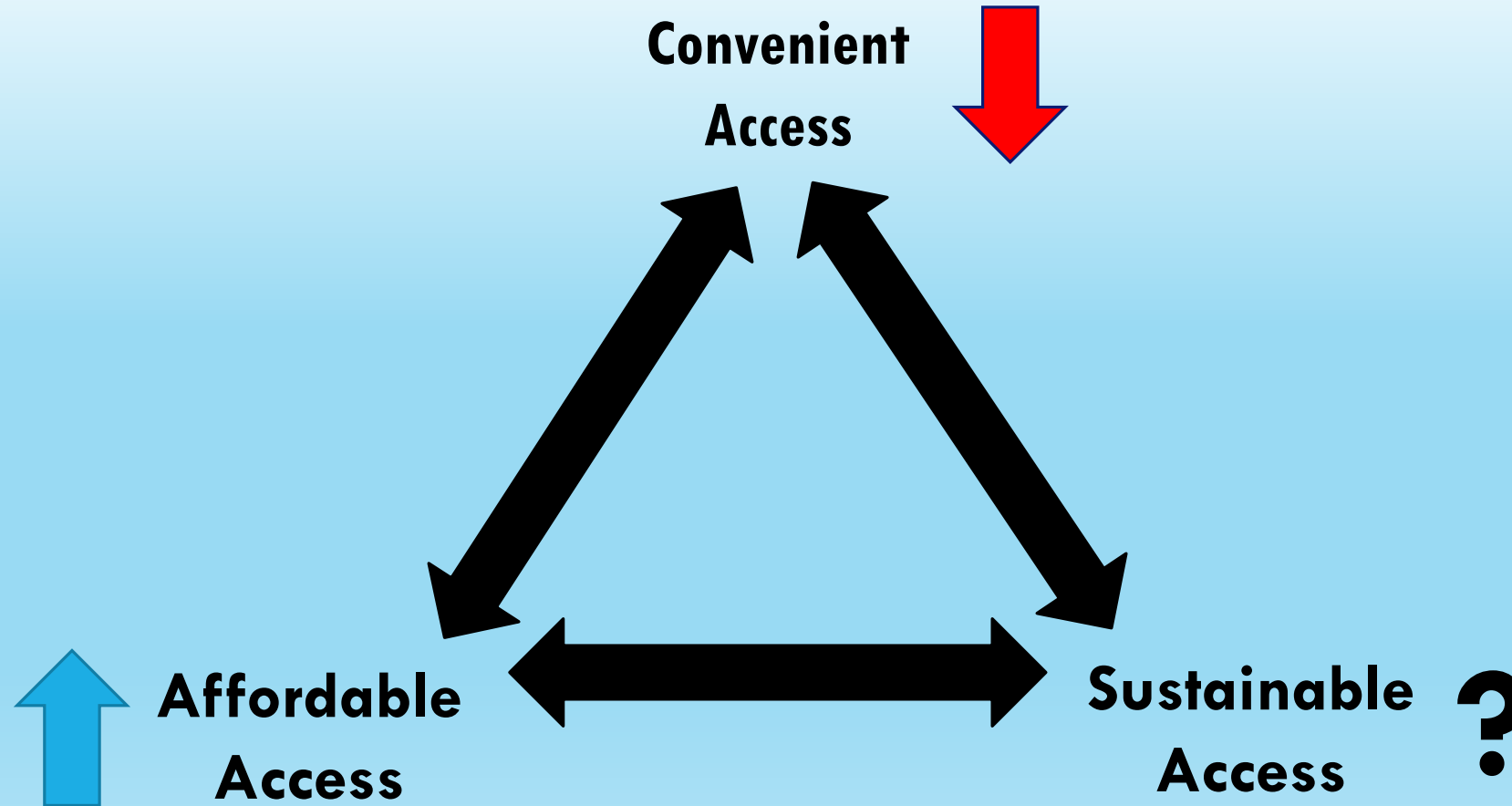
PARKING NEEDED



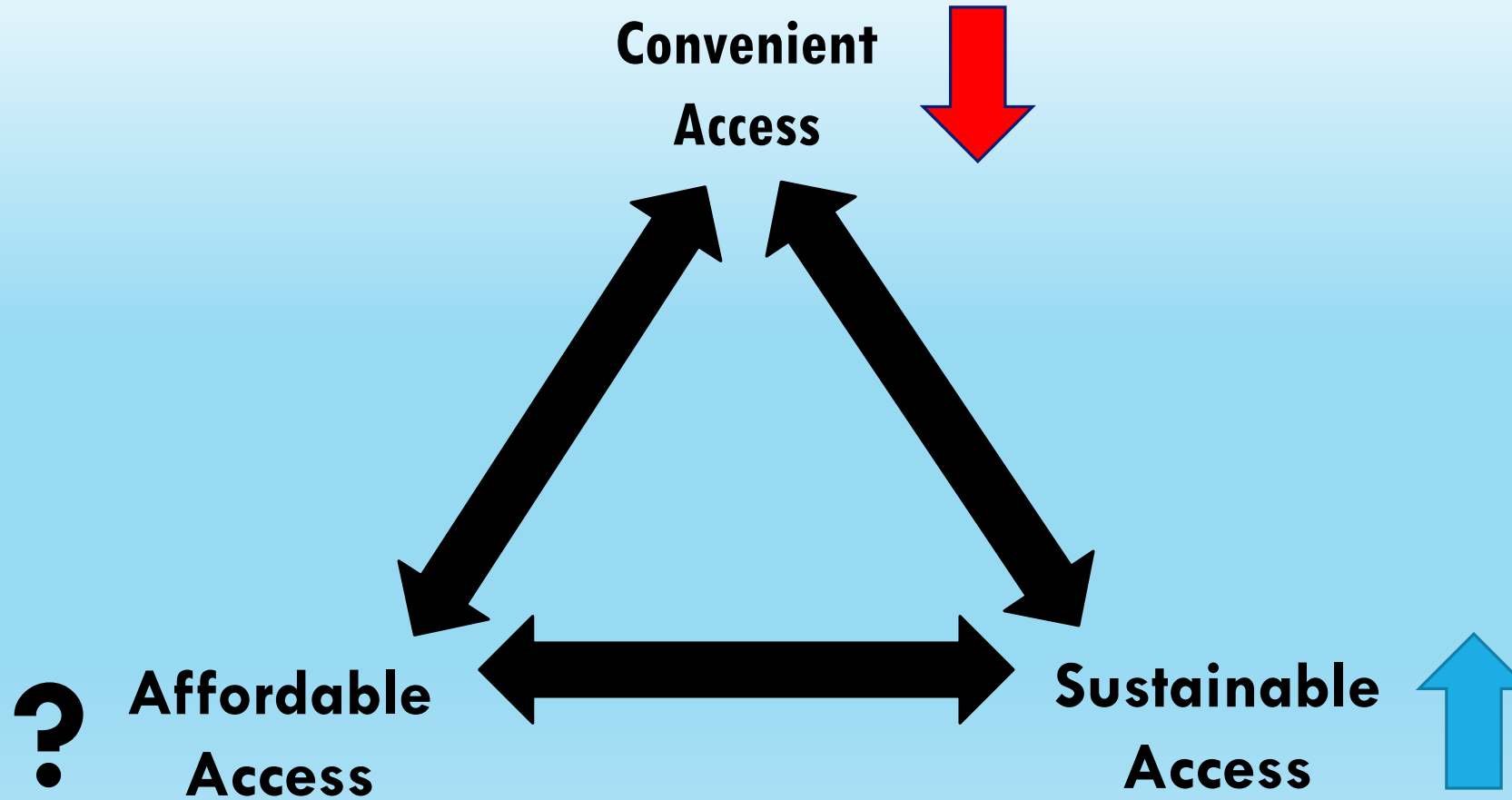
Our Fundamental Challenge 1 of 3



Our Fundamental Challenge 2 of 3



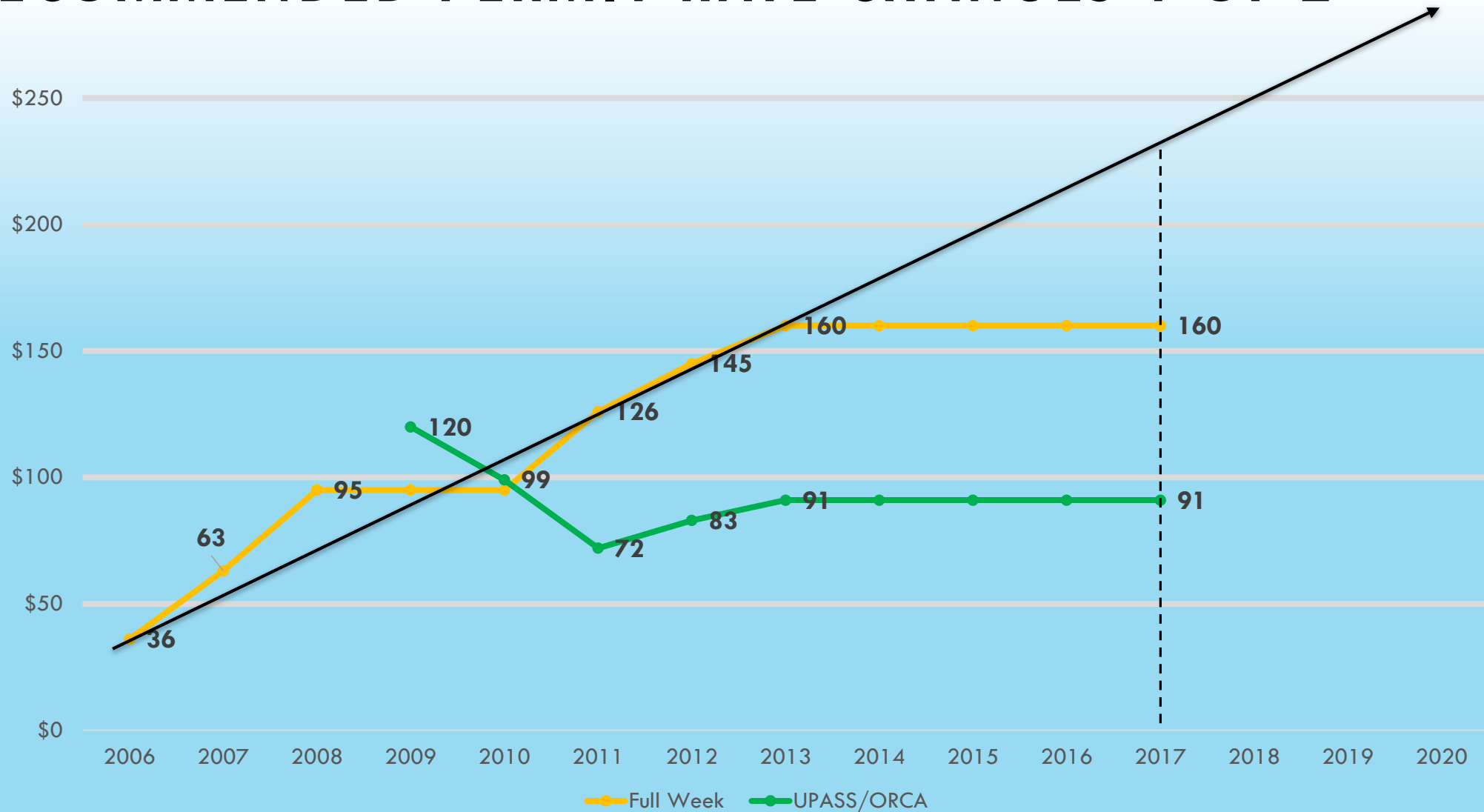
Our Fundamental Challenge 3 of 3



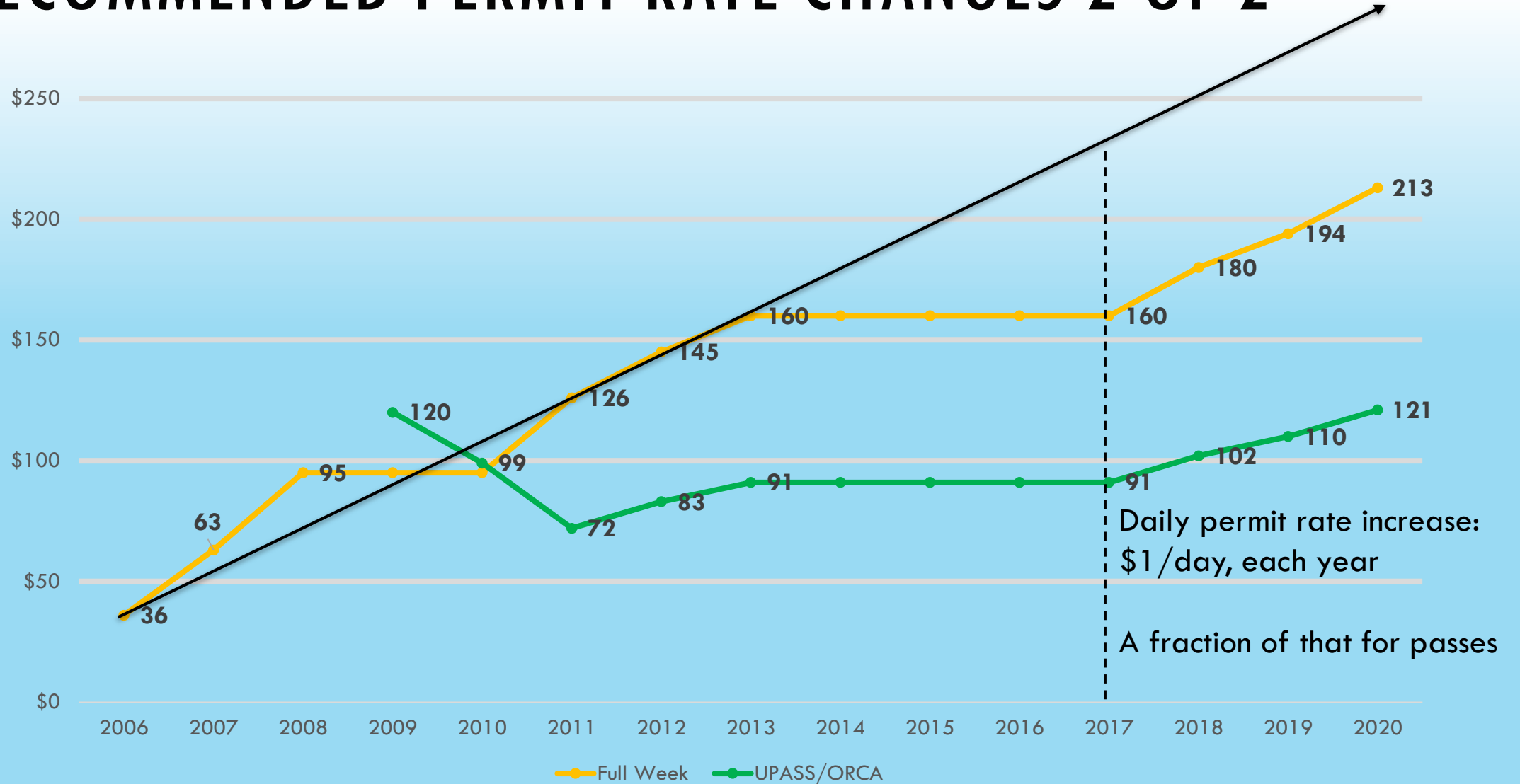
CSTF RECOMMENDATIONS

- Gradually increase parking rates over the next 3 years to fund the parking structure
- Beginning this fall, alleviate the current parking crunch by offering off-campus parking and a regular shuttle service
- Continue to subsidize the UPASS/ORCA Pass
- Promote awareness of alternative transportation options
- Lobby local transit agencies to increase the number and frequency of buses serving the campus
- Build a new parking structure to accommodate enrollment associated with UW Bothell 4 and CC4

RECOMMENDED PERMIT RATE CHANGES 1 OF 2



RECOMMENDED PERMIT RATE CHANGES 2 OF 2



RATE CHANGE RECOMMENDATION

Permit Cost

Permit Type	Preliminary Rate Recommendation				Rate Change Amount			Rate Change Percentage		
	Current	17-18	18-19	19-20	17-18	18-19	19-20	17-18	18-19	19-20
Daily Pass	6	7	8	9	1.00	1.00	1.00	17%	14%	13%
Quarterly Pass - 7 day	160	180	194	213	20.00	14.00	19.00	13%	8%	10%
Quarterly Pass - 3 day	121	136	147	161	15.00	11.00	14.00	12%	8%	10%
Quarterly Pass - 2 day	91	102	110	121	11.00	8.00	11.00	12%	8%	10%
UPASS	91	102	110	121	11.00	8.00	11.00	12%	8%	10%
Motorcycle	61	69	74	81	8.00	5.00	7.00	13%	7%	9%
Carpool	160	180	194	213	20.00	14.00	19.00	13%	8%	10%

Daily Cost

Permit Type	Effective Daily Rate				Effective Daily Rate Change Amount			Rate Change Percentage		
	Current	17-18	18-19	19-20	17-18	18-19	19-20	17-18	18-19	19-20
Daily Pass	6.00	7.00	8.00	9.00	1.00	1.00	1.00	17%	14%	13%
Quarterly Pass - 7 day	2.91	3.27	3.53	3.87	0.36	0.25	0.35	13%	8%	10%
Quarterly Pass - 3 day	3.67	4.12	4.45	4.88	0.45	0.33	0.42	12%	8%	10%
Quarterly Pass - 2 day	4.14	4.64	5.00	5.50	0.50	0.36	0.50	12%	8%	10%
UPASS	1.18	1.32	1.43	1.57	0.14	0.10	0.14	12%	8%	10%
Motorcycle	1.11	1.25	1.35	1.47	0.15	0.09	0.13	13%	7%	9%
Carpool	2.91	3.27	3.53	3.87	0.36	0.25	0.35	13%	8%	10%

The public is the only critic whose opinion is worth anything at all. — *Mark Twain*

