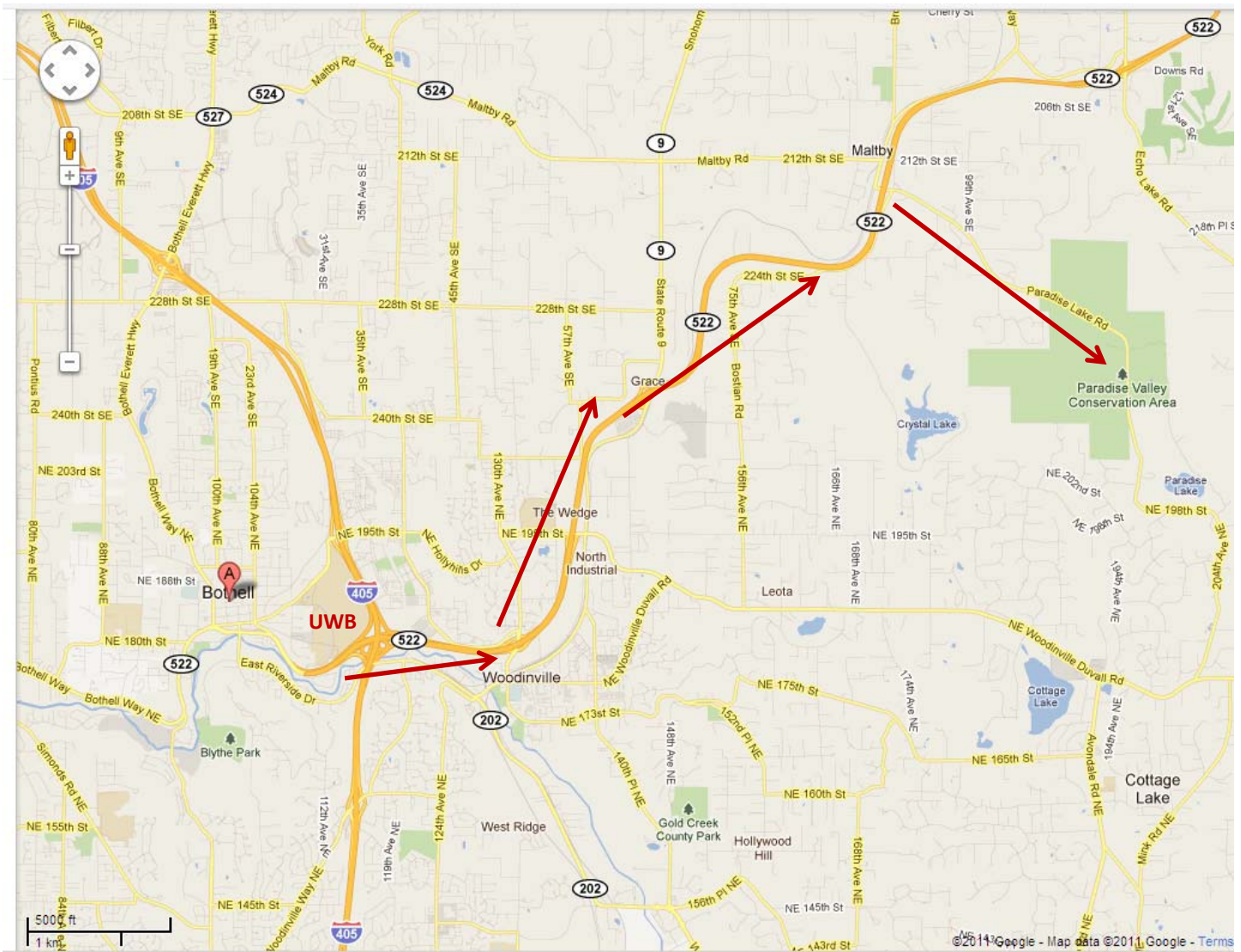


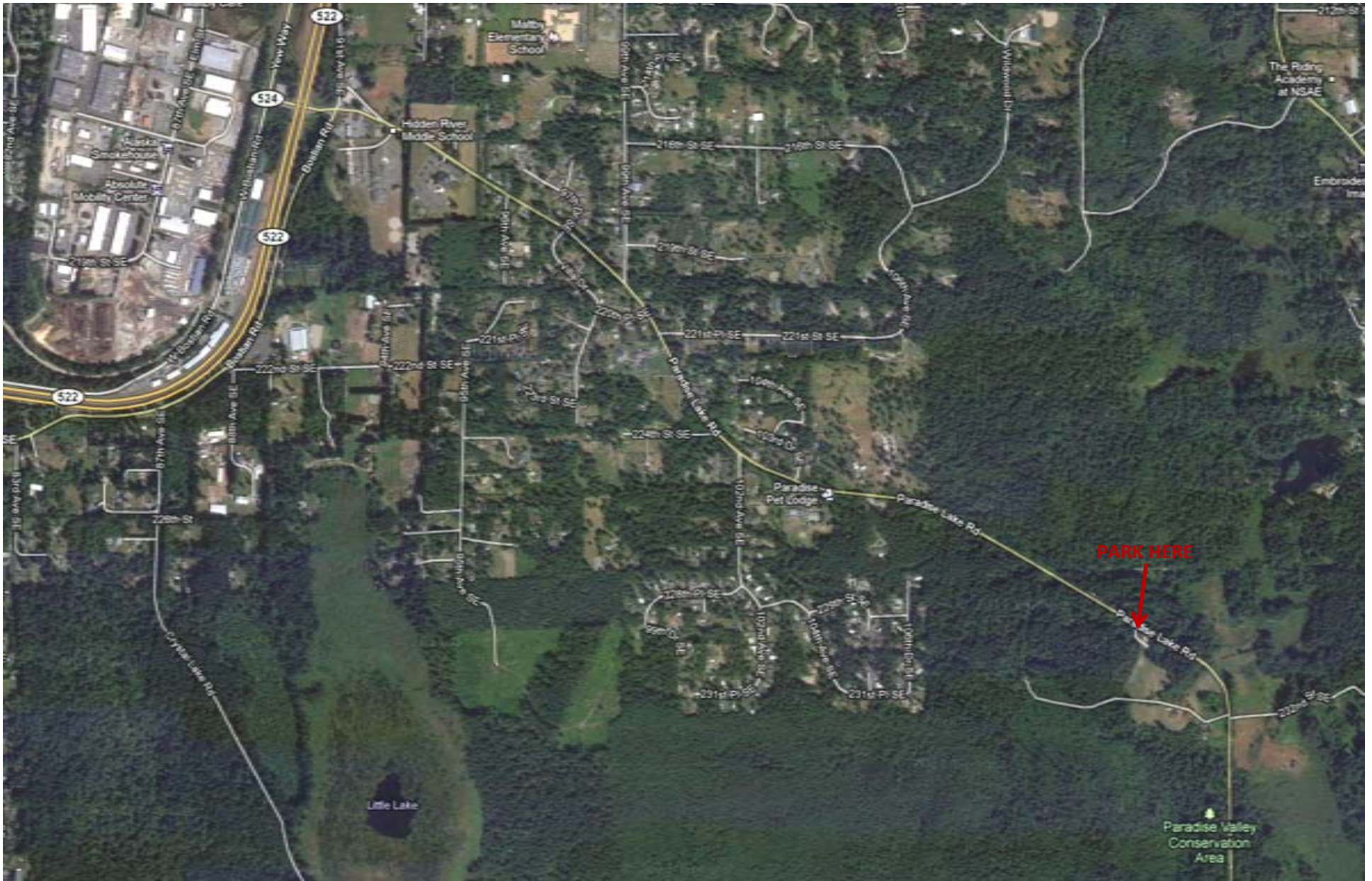
Paradise Valley Conservation Area

23120 Paradise Lake Road

Directions:

1. Exit south out of campus onto SR 522 toward Woodinville and Monroe.
2. Continue under I-405 and past exits for Woodinville and Highway 9. You will climb a hill and come to a stop light at an intersection with Maltby Road / Paradise Lake Road. TURN RIGHT at this light.
3. Go about 2 miles on Paradise Lake road to a parking area on your right for the Paradise Valley Conservation Area. There will be a sign at the entrance to the parking lot.
4. We will be on the trails near the parking lot (park map on the third page).







Snohomish County Parks and Recreation
www.snocoparks.org

PARADISE VALLEY CONSERVATION AREA

23120 Paradise Lake Road
Woodinville, WA 98077

Revised April, 2010

Legend

- | | | | |
|-----|-------------------------|--|---------------|
| | Multi Use Trail | | Stream |
| | Equestrian / Foot Trail | | Wetlands |
| | Bike / Foot Trails | | Waterbody |
| | Foot Only Trail | | Park Boundary |
| | One Way Trail | | Roads |
| | Waypoint | | |
| 0.3 | Miles Between Waypoints | | |



* All trails and other feature locations are approximate

