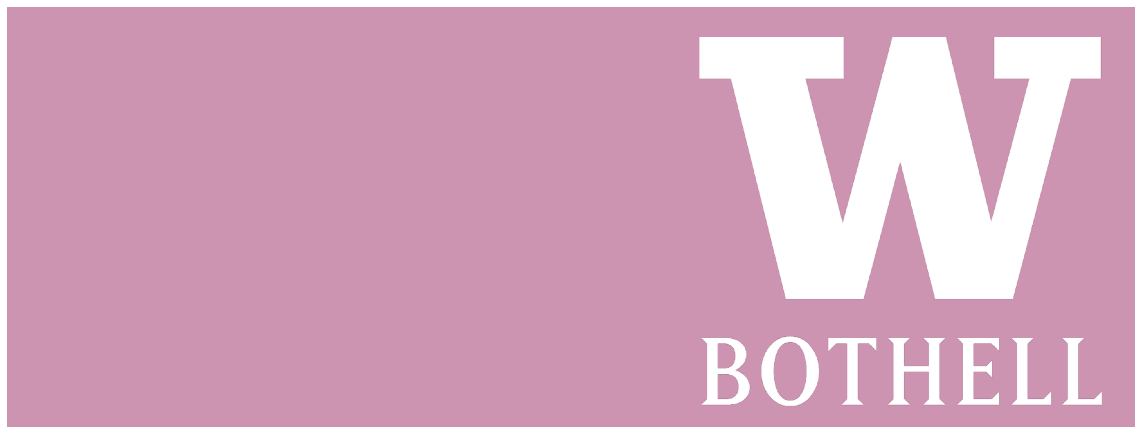
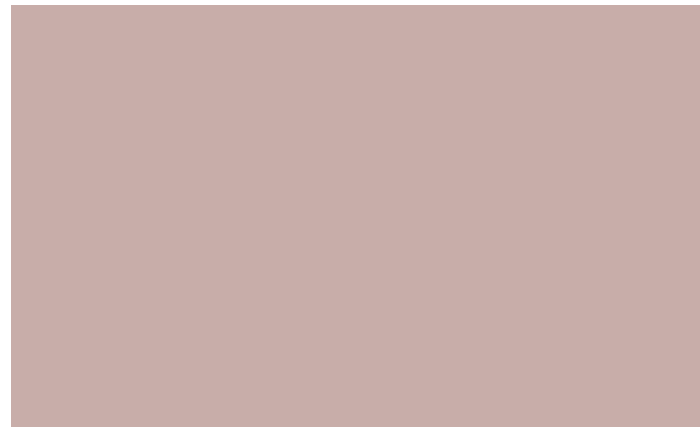


COMMUNITY ENGAGEMENT

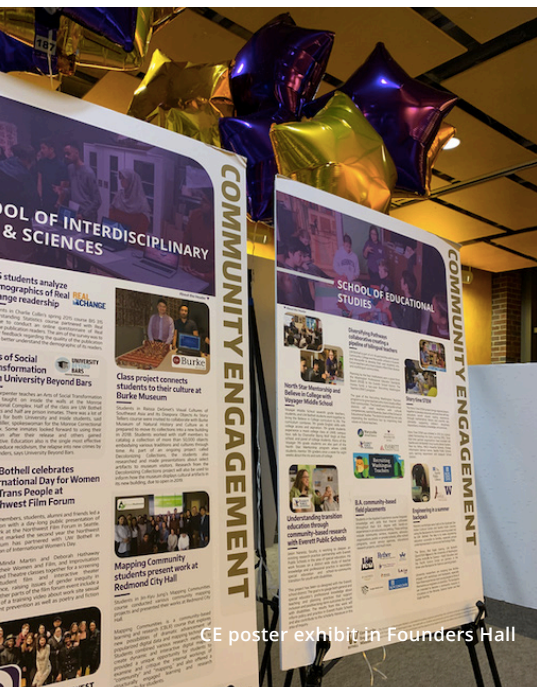
ANNUAL REPORT
2019-2020



W
BOTHELL



Filming ¡Basta!



CE poster exhibit in Founders Hall



Inside Stanwood Camano Food Bank

CONTENTS

- 4** Stories of Impact
- 6** Partnerships During COVID-19
- 8** Census 2020
- 10** Student Civic Leadership
- 11** Community Engagement Awards
- 12** Engaging Faculty & Staff
- 13** By the Numbers
- 14** Institutionalizing Community Engagement
- 15** Community Engagement Council
- 16** Celebrating Community Partners
- 17** Carnegie Classification
- 18** 2019-20 Community Partners
- 20** Contributions



CE MISSION

Behind the scenes at the Burke Museum archives

The University of Washington Bothell is committed to reciprocal partnerships that contribute to the just and equitable development of the North Puget Sound region and Washington State.

Our work with our students and community partners seeks to leverage our teaching and research in ways that increase the capacity of our region to identify and address local, national, and global challenges and opportunities.

RESIDENTS SAY WHAT TECH MAKES A CITY SMART

FALL 2019

As an urban geographer, School of Interdisciplinary Arts and Sciences (IAS) faculty Jin-Kyu Jung is familiar with smart city technology. Jung, who grew up in Busan, co-led an Early-Fall study abroad program with Gunwha Oh, a lecturer in the UW Department of Geography and affiliate IAS faculty. For their “Mapping Communities in the Smart City”

seminar, a group of nine UW students from the Bothell and Seattle campuses traveled to South Korea to see what smart city technology means on the ground.

The seminar provided students with a critical reflection on the smart city, urban regeneration and community-based process in the context of modern cities in South Korea, focusing on Busan. Students worked closely with the Department of Urban Planning at Pusan National University (PNU) in Busan and had the opportunity to learn alongside PNU students.

Learning first hand about theory and practice, and seeing real examples were important goals of the seminar. Equally important was to examine the concept and practices by working closely with local communities, who are often marginalized in planning conversations, yet greatly affected by the outcomes.

For their work with students in PNU's Department of Urban Planning in Busan, the UW students received a Korean Certificate of Smart City Planning. As a result of the study abroad visit, PNU may send a similar sized group of students and faculty to UW Bothell to learn about smart city technology in the Seattle area.



STUDENTS AND ELDERS WITH EARLY-STAGE MEMORY LOSS CONNECT THROUGH ART

School of Interdisciplinary Arts and Sciences (IAS) faculty Deborah Hathaway partnered with Edmonds Center for the Arts (ECA) and Silver Kite Community Arts to offer the intergenerational course, “Making Art Together.” Through the course, older adults facing early-stage memory loss worked collaboratively with UW Bothell freshman students to share their experiences and transform their stories into short theatrical performances.

Both groups came together in the workshops to honor and express their new beginnings through art.

The older adults' memories and stories were collected to create a short performance that was shared with the UW students. UW Bothell students learned and introductory acting, improvisation skills, and creative writing which they applied in a performance of their own.

The course gave classmates a chance to reflect on past and present challenges — either those they face now or those they've experienced in the past. College freshmen and dementia patients both are experiencing new stages in their lives. Sharing their feelings in class may have helped both deal with their next phase of life.

PREVENTING SEXUAL HARASSMENT IN AGRICULTURE

Jody Early and Victoria Breckwich Vásquez, both School of Nursing and Health Studies (NHS) faculty, co-led a grassroots effort in Washington state to address the issue of sexual harassment in agriculture, leading to the development of ¡Basta! Preventing Sexual Harassment in Agriculture, a prevention-focused toolkit that is tailored for worksite intervention.



¡Basta! — which means “enough” in Spanish — is the result of nearly six years of work that included growers, legal experts, lawmakers, civil rights advocates and more

than 70 farmworkers in Washington. Early and Breckwich Vásquez developed the training program through the Pacific Northwest Agricultural Safety and Health Center (PNASH), which is affiliated with the UW School of Public Health.

A number of UW students worked on the project. UW Bothell's Mayra Rivera (Health Studies '19), who grew up working in the fields, facilitated interviews with growers and helped create a social media marketing campaign. Other UW students include Teresa Mata (Public Health '19) and three Master of Public Health students or alumni: Dennise Drury ('21), Rocio Castillo-Foell ('19) and Nicole Davis Weaver ('17).

The Washington Coalition to Eliminate Farmworker Sexual Harassment is working for a change in state policy to make prevention training a requirement. Beyond training, Early and Breckwich Vásquez hope ¡Basta! becomes part of a movement.

STORIES OF IMPACT



Filming ¡Basta!



Students at Edmonds Center for the Arts



Students in American Government course

SNOHOMISH COUNTY VOTE TESTS GOVERNMENT CLASS

WINTER 2020

An American Government & Politics course, taught by School of Interdisciplinary Arts and Sciences (IAS) faculty Jason Lambacher, worked with the Snohomish County Department of Elections on seven research and analysis projects this spring. To launch the projects, County Auditor Garth Fell, the elections manager, and Duncan Clauson, voter outreach specialist, briefed the class on the county, its voters and efforts to improve elections and turnout.

In addition to voter participation and ballot access, the projects included analyzing census data by voting district and changing ballot design.

One group suggested new voter registration outreach to persons with disabilities, low-income persons and communities of color. Another suggestion to the elections department was to hire and promote from within the communities it wants to engage. The ballot-design team suggested labeling each candidate or question with the corresponding page of the voter's pamphlet.

The UW Bothell students provided election administrators a different point of view, Fell said.

"It gives us an opportunity to learn more about our own community and look at ourselves from a different perspective."

MBA STUDENTS IMPROVE FOOD BANK 'FLOW'

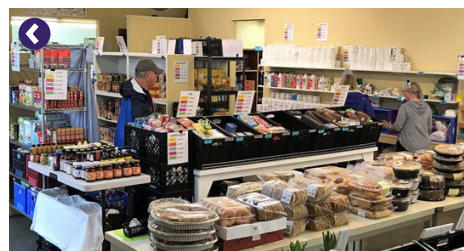
The Standwood Camano Food Bank is serving more people more efficiently thanks to advice from two teams of UW Bothell Master of Business Administration (MBA) students. The teams were made up of 11 graduate students from Operations Management courses taught by School of Business faculty, Gülru Özkan-Seely. She connected with the food bank through a member of its board, Randy Serroels, a UW Bothell MBA alum.

The food bank provides about 75,000 pounds of food each month to more than 1,000 people. The service is part of Food Lifeline, a Seattle-based charity that is a member of the nationwide Feeding America network. Lynne Ayers, executive director of the food bank, was looking to improve efficiency when she and Özkan-Seely designed the two projects: inventory tracking and improving the flow of customers.

Students worked on the projects in autumn quarter 2018, and the food bank implemented changes in 2019.

The food bank now operates on a grocery model, so members feel more like they are shopping at a typical store. To improve the experience for members and increase efficiency, the inventory team made a suggestion for color coding products that the food bank modified and put on wall posters, so families know how many of an item to take.

Özkan-Seely has remained in contact with Ayers, who says she would welcome working with more UW Bothell students at the food bank in the future. Ayers said their reports and recommendations have also been critical in presentations to her board and to donors.



*The new year brought on
unforeseen obstacles...*

PARTNERSHIPS DURING COVID-19

BRIDGING DISTANCE THROUGH FILM

SPRING 2020

UW Bothell students in the Resilient Visions course, now in its second year, partnered with students from Jinan University in Guangzhou Province of China and Shi Hsin University in Taipei, Taiwan, to curate and produce the 2020 Resilient Visions film festival.



Students in each class first learn different models for organizing film festivals and then are challenged to produce the Resilient Visions festival on their own.

In addition to going international, this year Resilient Visions went virtual. This year, the course was taught by Minda Martin, IAS faculty. When planning began in autumn 2019 for the second rendition of this course, Martin didn't anticipate that Resilient Visions would take a virtual form. Then came the coronavirus pandemic.

"Many of the festivals that were scheduled are cancelling right now because they don't want to or can't go online," said Martin. "But we felt it was important to bring people together to watch these films, even if that meant it was done remotely."



After receiving and judging the film, audio, 360 videos and photo submissions of students and alumni from UW Bothell and students from two partner universities, the event organizers streamed the film fest on Northwest Film Forum's website in June.

The films are now made available through the student-created Resilient Visions website and through AAT TV. The photographs, audio works, and 360 videos also will be made available at an art gallery in the future.

MAKERSPACE 3D PRINTERS MAKE FACE SHIELDS

UW Bothell's Makerspace may not be open, given restrictions due to the coronavirus pandemic, but that does not mean all activity has stopped in the Discovery Hall workshop. Students can submit online requests for staff at the Makerspace to help fabricate parts needed for their projects. The staff are also now turning out parts for face shields to help protect doctors and nurses at the UW School of Medicine, Harborview Medical Center and other facilities in the UW Medicine system.

When it became apparent that the coronavirus was causing a shortage of personal protective equipment for health care workers, faculty started thinking about how UW Bothell could rapidly deploy equipment in the Makerspace to support the medical community. Initially it was the shortage of N95 masks that prompted Jody Early, faculty in the School of Nursing & Health Studies, and Pierre Mourad, faculty in the School of STEM at UW Bothell and neurological surgery professor at the UW in Seattle, to engage a number of colleagues in the effort. This included Rafael Silva, the Makerspace operations manager; Troy Dunmire, the mechanical engineering lab manager; and Cinnamon Hillyard, the interim associate vice chancellor for undergraduate learning. Mourad turned for help to Design that Matters, a Redmond-based nonprofit that typically applies rapid prototyping and human centered design to medical devices in low resource settings.

The goal was an easy-to-fabricate design that could be used to make face shields that would help protect health care workers until manufacturers caught up with growing demand. Multiple clinical and engineering hands led to the design, Mourad said. They included Timothy Prestero, the CEO of Design that Matters; Elizabeth Johansen of the Boston-area Spark Health Design; and Dmitry Levin of the UW School of Medicine, who led efforts that involved the maker community on the UW Seattle, Bothell and Tacoma campuses.

As of April 8, Mourad reported, the entire tri-campus DIY community produced 500 face shields. Through a connection with Prestero, the School of Medicine and Boeing teamed up to support Boeing's possible production of these shields, with discussions on-going.



Physically distant, but socially partnered.

NURSING STUDENTS INVESTIGATE K-12 COVID ISSUES

SUMMER 2020

This summer, 11 students in the Population-based Health in Community Practice course taught by Robin Fleming looked deeply into some of the tough issues that confront K-12 schools as they make plans to reopen at some point during the ongoing coronavirus pandemic.

The students worked with the Northshore School District, which covers 33 schools in Bothell, Woodinville and Kenmore. Working remotely through teleconferences, the students teamed up on three projects with Lisa Nenno, a school nurse, and with Jennifer Woods, a special education teacher. The nursing students presented their findings and recommendations Aug. 18 to representatives of the school district and the campus community.

One team researched guidelines for chronically ill children in a classroom. These are children, such as those with asthma, who won't be able to wear masks. Another team of UW Bothell students looked at how the pandemic is affecting routine vaccinations for childhood diseases, such as the measles, mumps and rubella vaccine (or MMR). The team recommended better education for parents, information about low-cost clinics and streamlining vaccination documentation on a registry.

The third issue involved medically fragile students with significant intellectual and physical disabilities who often require face-to-face contact and personal care such as lifting. In addition to even more rigorous hand-washing and surface disinfecting, the team recommended affordable alternatives to personal protective equipment such as rain ponchos.

Fleming said her students also realized they are working in an atmosphere in which new health information comes out by the hour and recommendations can change.

Nenno, the school nurse, said the UW Bothell project was a collaborative effort in which students learned about state law requirements, informatics, community outreach and engagement with local and state organizations. The nurses also brought their own working knowledge, she said before the presentation.

The students, all working nurses, were summer graduates from the School of Nursing & Health Studies with Bachelor of Science in Nursing degrees.

CORONAVIRUS PREVENTION TIPS

Symptoms of Covid-19



COUGH



RUNNY NOSE



FEVER



MUSCLE PAIN

Prevention Tips



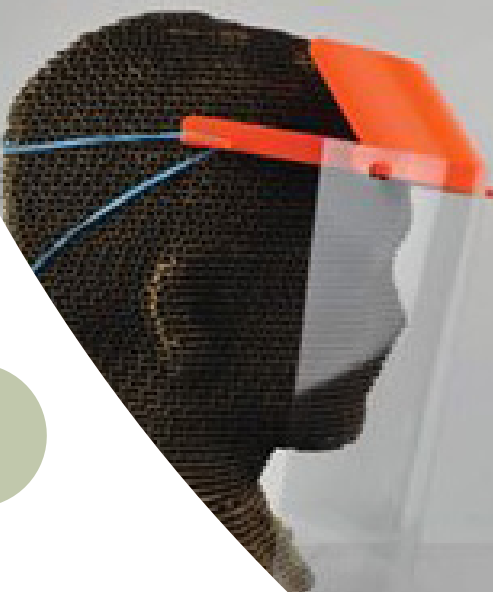
WASH YOUR HANDS



WEAR A MASK



PHYSICALLY DISTANCE



I COUNT. WE COUNT.

The United States does a population count every 10 years. This exercise is called the Census, and it serves as the basis for planning and distributing political power and economic resources for the next decade. This past spring, UW Bothell students, staff, faculty and local community organizations worked to ensure that students – and their families and members of their home communities – count this year.

Our count matters to UW Bothell students because it informs:

Funding for federal student loan programs

Funding for campus improvements and the general campus

Students' future careers, i.e. many professionals rely on Federal funding for research, planning, or other support

of Washington state seats in the house of Representatives for the next 10 years



MAYA MANUS
Urban League of Metropolitan Seattle

ALEJANDRA PEREZ
*UW Bothell Alumni,
Class of 16*

ARETHA BASU
UW Bothell Alumni, Class of 17

EVERYONE COUNTS!

2

winter community-based learning courses partnered with local organizations with the goal of making a change in the census process. Read more below.

9

census ambassadors included leaders from student government, the Student Diversity Center and the Achieving Community Transformation (ACT) student group.



3

census speakers and alumni were selected by students on the UW Bothell Census Committee. These speakers addressed the importance of a complete census count for historically undercounted communities.

21

Over this last academic year, 21 Progress, a Seattle nonprofit that trains young people interested in social change to become civic leaders, has been working with 9 students, training them to serve as census ambassadors and encourage everyone in the community to be counted in this year's U.S. census.

6200

people reached. With Washington's stay home order and the census deadline extended, the team from 21 Progress and UW Bothell shifted to virtual outreach. Through emailing, social media, short videos, memes, websites and Zoom meetings, the student census ambassadors reached more than 6,200 people this spring.

First-year students in Gary Carpenter's Creative Activism: Inspiring Change Through the Arts class partnered with the cities of Bothell and Kenmore and with the Ronald Commons Housing in Shoreline to create art that raises awareness of the census.

Students in Charlie Collins' Policy Studies Practicum class partnered with Gambian Talents Promotion, which promotes Gambian culture in Washington; Homage, a senior services organization in Lynnwood; and UTSAV, a statewide organization based in Bothell that connects south Asians with local communities.

Both courses sought to impress upon students the importance of the census and the implications of inequity in representation.



STUDENT CIVIC LEADERSHIP

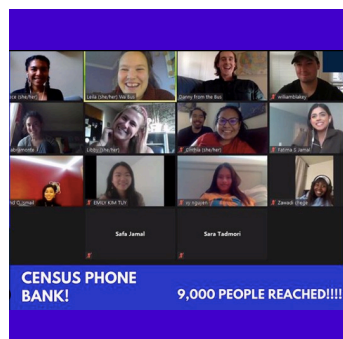
At UW Bothell, students can engage with the campus and community through their courses and community-based learning, undergraduate and graduate research, study abroad, internships, capstone projects, and student organizations.

Learn more at UWB.EDU/COMMUNITY-ENGAGEMENT/WAYS-TO-ENGAGE

Environmental Policy Coalition is a student club that focuses attention on the environment and how it affects UW Bothell students. In March, members Tyrell Dozier and Yasemin Ibrahim engaged students in discussions about the climate policy positions of presidential candidates.



Face mask making party through zoom, hosted by Achieving Community Transformation (ACT). Face masks were produced and donated to Providence Institute for a Healthier Community.



The student organization Achieving Community Transformation (ACT) partnered with Washington Bus to host a virtual Census Phone Bank event. The students reached over 9000 community members.



Zack Nelson, president and co-founder of the tri-campus club UW Blockchain Society, was the instructor for a Blockchain and Bitcoin 101 class. The course was offered through the Osher Lifelong Learning Institute at UW, which presents classes to seniors over the age of 50.

Thanks to the ASUWB, PPE were donated to UW Medicine. Christy Cherrier, School of STEM lab manager, coordinated the effort to donate unopened boxes of nitrile gloves in the school's teaching labs that were purchased with student course fees.



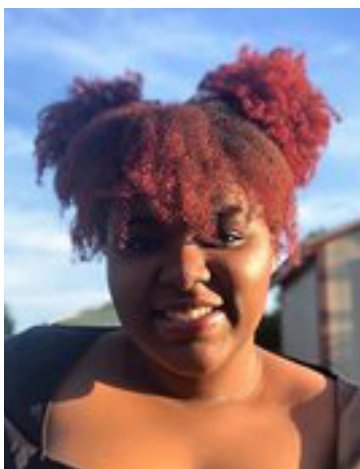
Tyson Kemper, UW Bothell grounds supervisor, introduced members of the Sustainable Student Action Club to the Farm in February and led them in starting seeds in the Conservatory. Come warmer weather, they also will help transplant seedlings outside.



COMMUNITY ENGAGEMENT AWARDS

In 2020, the Community Engagement Council developed and awarded two new community engagement awards for faculty and staff.

Learn more at UWB.EDU/COMMUNITY-ENGAGEMENT/AWARDS



OUTSTANDING STUDENT CIVIC LEADER

Paris Bruner (STEM '21) has worked with youth in the community with Coding for Kids, volunteered as a site lead for ACT, and has been promoted to a staff lead in the campus makerspace.



EMERGING STUDENT CIVIC LEADER AWARD

Ada de la Cruz (STEM '22), a sophomore intending to major in biology, continues to grow her civic leadership skills as a Mariner Community Campus Student Liaison, deepening her civic leadership in Everett.



OUTSTANDING COMMUNITY- ENGAGED SCHOLAR AWARD

Deborah Hathaway's (IAS faculty) scholarly work centers around creating community through performance. Hathaway presents regionally about her pedagogy and has also supported other faculty in their courses and partner development.



OUTSTANDING PUBLIC SERVICE AWARD

Danielle (Dani) Rowland (American & Ethnic Studies Librarian, UW Bothell/Cascadia Campus Library) has been an active volunteer with University Beyond Bars (UBB) and the Alternatives to Violence Project (AVP).

DIVERSITY, EQUITY, COMMUNITY ENGAGEMENT FELLOWSHIP

DECE PROJECTS & PARTNERSHIPS

The purpose of the DECE Fellowship is to enhance the capacity of UW Bothell faculty and staff to integrate diversity, equity, and community engagement through the development or redevelopment of: a course/syllabus, programs aimed for students, community partners, faculty development, and research that directly engages the university with communities. The Fellowship was co-led by Raissa DeSmet, senior lecturer and chair of IAS diversity committee, and Kara Adams, director of community engagement.

Learn more at UWB.EDU/CBLR/DIVERSITY-COMMUNITY-FELLOWSHIP

Ching-In Chen, School of Interdisciplinary Arts & Sciences

Creatively Responding to Environmental Justice Challenges in Eco-Justice: Writing the World

Paola Rodriguez Hidalgo, School of STEM

"By Teaching We Learn": Serving Underrepresented Populations in the Community by Implementing Service Learning in a General Education Course

Alejandro Francetich and Codrin Nedita, School of Business

UW Bothell – First-Gen Access and Success

Jung Lee and Sakara Buyagawan, School of Interdisciplinary Arts & Sciences

Supporting International IAS Students within the UW Bothell Community



DECE Fellows with facilitators team after the first retreat in October 2019. L to R: Codrin Nedita, Ching-In Chen, Sakara Buyagawan, Jung Lee, Min Tang, Raissa DeSmet, Kara Adams, Layla Taylor, Dan Bustillos/ courtesy of Codrin Nedita.

Min Tang, School of Interdisciplinary Arts & Sciences

Media Workshop Pitch, Collaboration with Northshore School District and BIS 235 Critical Media Literacy course

Dan Bustillos, School of Nursing & Health Studies

Our Community's Access to Washington's Charity Health Care System

COMMUNITY ENGAGEMENT BY THE NUMBERS

Our community partners represent local government, non-profits, for-profits, K-12 schools, regional community colleges and global universities, and internal UW Bothell departments. Many of our partners collaborate with UW Bothell through capstones, community-based learning and research, and internships.

1781

unique student enrollments in CBLR courses.

30% of UW Bothell students

341

partners collaborated with faculty, staff, and students through curricular engagement in 2019-20.

78

faculty members taught CBLR courses.

16.5% of UW Bothell faculty

142

CBLR Course Sections were offered this year, **135** of which were undergraduate courses and **7** were graduate courses.

95

partners collaborated with faculty and students in community engaged **capstones** in Computer Science & Software, Electrical Engineering, Mechanical Engineering, and Restoration Ecology programs.

134

partners provided **internships** to students in: Business, Interdisciplinary Arts & Sciences, Educational Studies and STEM. This number does not represent all internships, but captures most of the credit bearing internship courses.



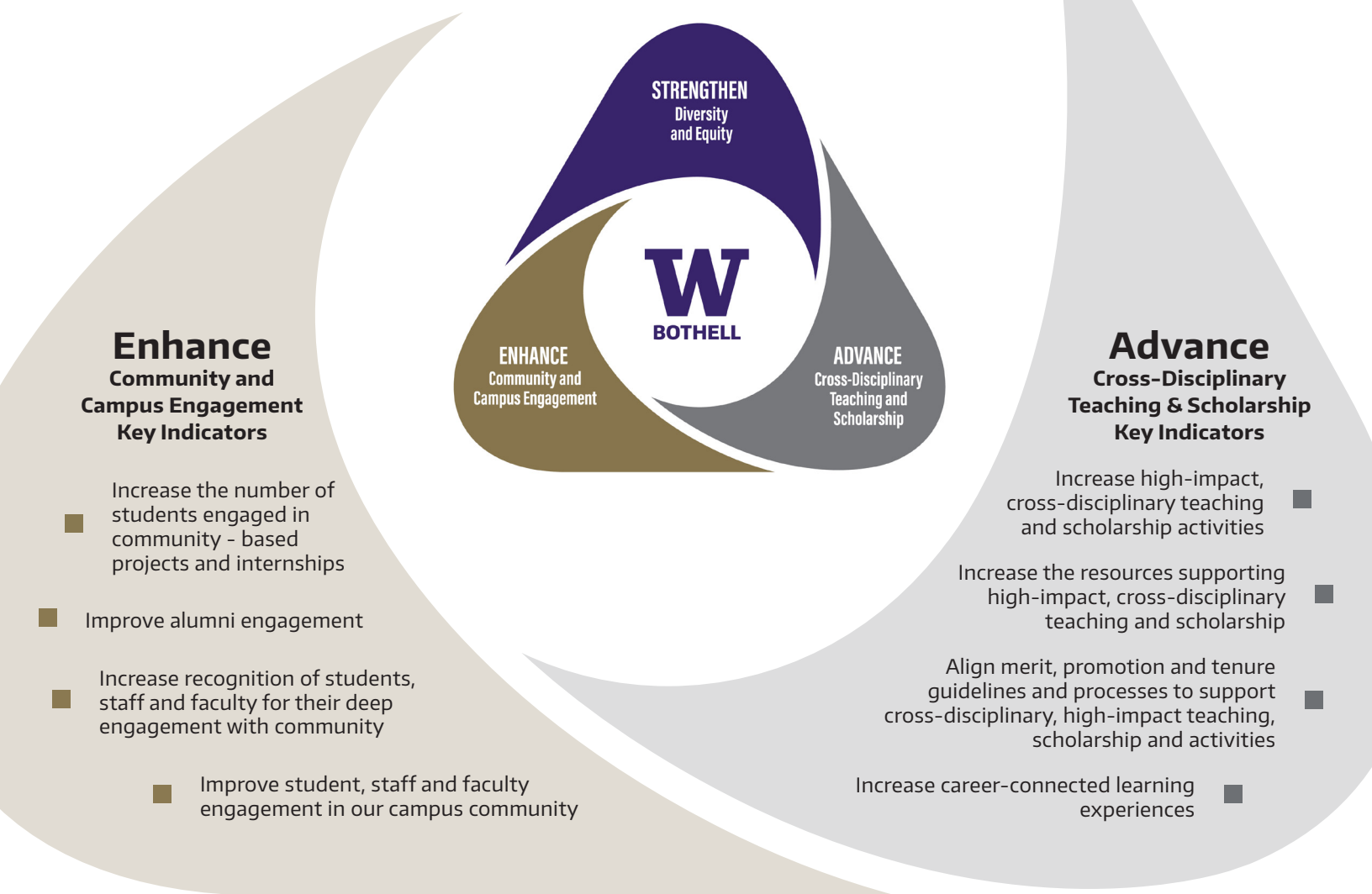
Students performing at Edmonds Center for the Arts

INSTITUTIONALIZING COMMUNITY ENGAGEMENT

COMMUNITY AND CAMPUS ENGAGEMENT NAMED ONE OF THREE KEY PRIORITIES FOR UW BOTHELL IN 2020 STRATEGIC PLAN

UW Bothell is committed to community and campus engagement that enhances the collaborative and reciprocal relationships between students, staff and faculty as well as with regional, national and global communities.

We realize community engagement by supporting the strategic partnerships of students, staff and faculty with local government, organizations and businesses. Students, staff and faculty partner in order to co-create and apply knowledge, creativity and resources that address local, national and global challenges and opportunities. These efforts also enhance learning, career connection and engagement for students.



COMMUNITY ENGAGEMENT COUNCIL

The Community Engagement Council's central purpose is to advise and assist the University of Washington Bothell in advancing its Community Engagement Mission. During the 2019-2020 year the Chancellor's Community Engagement Council started, progressed, or recommended a number of initiatives for UW Bothell.

Key outcomes achieved include the following below.

OUTCOMES ACHIEVED

Supported and Facilitated Community Engagement Ballot Items of the General Faculty Organization (GFO)

1. New campus undergraduate Community Engagement Learning Goal;
2. Inclusive Scholarship Statement.

The development of these initiatives started during the Carnegie Classification application process and were advanced by the CE Council through review, editing, and circulation for feedback. To implement these initiatives, they were brought to the GFO for a vote. The CE Council representatives helped inform their schools and units about these initiatives. Both passed in March 2019.



◀ **Carnegie Foundation Elective Community Engagement Classification:** Since 2017 the council was involved in developing an application to seek the Carnegie Foundation Elective Community Engagement Classification. Read more on page 17.

Developed and Awarded Two New Community Engagement Awards

Read about the Outstanding Community Engaged Scholar award and Outstanding Public Service award on page 11.

◀ Strategic Plan Participation and Priority Input

In 2019 a development of a new Campus Strategic Plan was undertaken by a planning committee. The Community Engagement Council had representatives participate on the committee and based on faculty, staff, student, and partner feedback, community engagement became incorporated into one of the three Campus Priorities of the new plan.

INITIATIVES ADVANCED & IN PROGRESS

Community Engagement Action Plan

The Plan compiles and explains the gap areas identified from the Carnegie Classification Application process and the resource and management needs to address the gaps. The Plan will be circulated for approvals and acted on as funding allows in 2020/21.

Community Engagement Assessment and Key Indicators

The 2019/20 Assessment working group met to consider what and how key indicators might be collected to tell UW Bothell about our CE efforts. The working group explored current assessment tools and information about assessment from other universities.

New Tri-Campus Community Engagement Course Designation (CEL)

The 2019/20 Curriculum & Co-Curriculum working group has been engaged in the Tri-campus discussions of a course designation and definition. The designation will continue to be reviewed next year.



Updated Community Engagement Mission Statement

The Mission Statement was reviewed and updated following the Carnegie Classification Application to more clearly and broadly capture Community Engagement at UW Bothell. See new mission statement on page 2.

Exploration of a Campus Community Engagement Partnership Strategy

The 2019/20 Partnership working group met to consider a campus level partnership strategy, such as a placed-based or issue focused strategy. This would allow for broader collective institutional and region impact.

New Community Engagement Partnership Spectrum

The Partnership Spectrum provides a way to layout the different avenues of CE partnership at UW Bothell and consider the resource allocation needs of different types of partnerships. It will be a tool to help UW Bothell members more clearly talk about partnerships and goals.



CELEBRATING OUR COMMUNITY PARTNERS

SCHOOL OF INTERDISCIPLINARY ARTS & SCIENCES (IAS) OUTSTANDING COMMUNITY PARTNER AWARDS

In 2020, the school of IAS recognized two community partners.

RENT MASON BEES

Rent Mason Bees supports the future of food production by promoting the health and conservation of native mason bees which are critical pollinators to orchards and crops and help sustain ecosystems. The Bothell-based business is the only program in the country that rents mason bee kits to orchardists and backyard gardeners seeking an alternative to the burdensome efforts of beekeeping. IAS faculty and students have partnered with Rent Mason Bees since 2016 to support research and mapping of bee habitat and survival.

SEATTLE CHILDREN'S ALYSSA BURNETT ADULT LIFE CENTER (ABC)

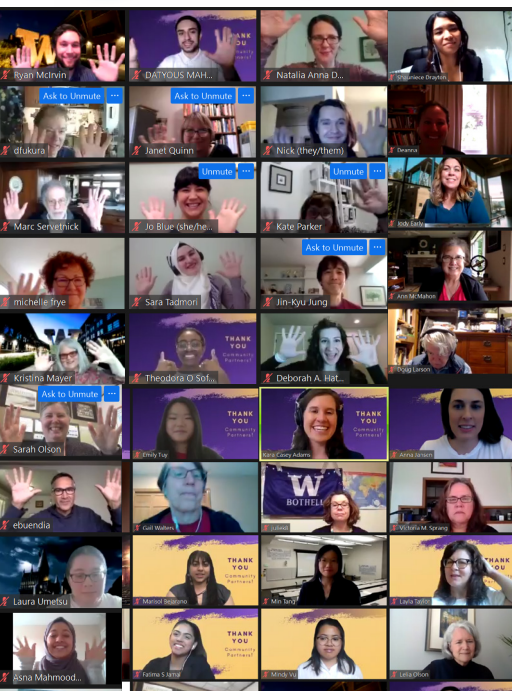
Seattle Children's Alyssa Burnett Adult Life Center (ABC) is located in Bothell and offers lifelong learning for people 18 and older with autism spectrum disorder and other developmental disabilities. Through classes and activities, ABC provides meaningful opportunities for adults to build on strengths, increase confidence, and promote independence. ABC began working with UW Bothell in 2014, and IAS faculty and students have partnered with them on multiple meaningful collaborations that promote inclusion and mutual understanding.



COMMUNITY PARTNER APPRECIATION EVENT

Held virtually, UW Bothell celebrated community partners on June 10th. Eleven community organizations were honored for 5+ years of partnership:

- Northwest Film Forum
- King County Prosecutor's Office
- Mukilteo School District
- La Raza de Noroeste
- International Examiner
- Real Change
- Bothell-Kenmore-Kirkland Reporter
- United Way of King County
- Verdant Health Commission
- Providence Institute for Healthier Community
- Latino Education Training Institute





CONGRATULATIONS

From L to R: Edward Buendia, Jeff Jensen, Kara Adams, Jason Naranjo, Shauna Carlisle

UW BOTHELL RECEIVED NATIONAL RECOGNITION THROUGH RECEIVING THE CARNEGIE COMMUNITY ENGAGEMENT CLASSIFICATION!

The Carnegie classification is recognition of relationships the university has with more than 400 businesses, nonprofits, schools and other partners. Internships, capstone projects, student exchanges with other universities, even student clubs that perform community service – any interchange with external partners that is reciprocal and mutually beneficially is community engagement.

UW Bothell actively pursued the Carnegie Community Engagement Classification as an end and a means of developing our community engagement infrastructure in a way that aligns with best practices. This work involves institutionalizing community engagement through campus identity and commitment, curricular engagement, and community outreach. UW Bothell received the Classification in 2020.



RECOGNIZING OUR PARTNERSHIPS

We give thanks to our community partners that worked with the university over the **2019-20** academic year. We recognize this list may not capture all UW Bothell partnerships.

Learn more about the options for partnership with the University of Washington Bothell at: UWB.EDU/COMMUNITY-ENGAGEMENT/WAYS-TO-ENGAGE

FIRST YEAR & PRE-MAJOR

21 Acres
ArtsWest
City of Bothell
City of Kenmore
Edmonds Center for the Arts
Pacific Science Center
Silver Kite Community Arts, LLC
UW Global Innovation Exchange

BUSINESS

98point6
Action Jackson Drain Cleaning and Plumbing LLC
Allsight Vision Care
Amazon
Ameritrust
Anna's Home Furnishings
Boeing
Broderick Group
Builders Capital
Carbay Information Technology
Cascadia Smiles
CASHE
Catch22Market
Clark Nuber
Cocoon House
Community Passageways
Compass Property Management LLC
Crate and Barrel
Cream and Cone

DataCloud
Diedrich Espresso
Downtown Emergency Service Center (DESC)
Epic Games
Exotic Nails & Spa
Fidelity Accounting & Tax Services
Flohawks
Fluke
Forum Social House
Genie
Go Together Inc.
Golden Financial Exploration Association
HDR Engineering, Inc.
Hohimer Wealth Management
Latino Educational Training Institute (LETI)
Leading Retirement Solutions
Marysville Chamber of Commerce
McManus Brothers
Microsoft
Molbaks
Moss Adams
NAMI Greater Seattle
Nestle/Nestle Coffee Partners
NetForce Global
Northshore Senior Center
Ocean Beauty
PACCAR
Parciaon Private Wealth
Penn Schoen Berland
Phillips Real Estate

Quosphere
Rachel Brooks Jewelry
Richard Kwon, CPA
Romp Silverberg LLC
Ryan Art Gallery
School of Medicine, UW
Stocker Farms
Sweeney Conrad P.S.
T Mobile
Tesla
The Daily Herald
T-Mobile
Trailer Source Inc.
Transition 360
Unify Square
United States Census Bureau
Venture Real Estate Group
VerAvanti
Warner Marketing Incorporated
Westlake Associates Inc.
Workforce Snohomish
Wyze Lab
Yelp

EDUCATION

Asian Counseling and Referral Service
AVID, Henry Jackson High School
Briarcrest Elementary
Canyon Creek Elementary
Center for Human Services
Challenger Elementary
Cocoon House
Coding with Kids

Crystal Springs Elementary
Dale Turner Family YMCA
Dimmitt Middle School
Discovery Elementary
Diversifying Pathways - Education Pathways Consortium
Domestic Violence Services of Snohomish County
East African Community Services
Echo Lake Elementary
Edmonds School District
Einstein Elementary
Emerson Elementary
Everett High School
Fairmount Elementary
Foreign Language for Youth
Foreign Language for Youth (FL4Y)
Franklin Elementary
Friends of North Creek Forest
Hazelwood Elementary
Horizon Elementary
Imagine Children's Museum
Issaquah Valley Elementary
Keller Elementary
Kenmore Middle School
Kennydale Elementary
Lake Washington School District
Latino Educational Training Institute (LETI)
Lowell Elementary
Lynndale Elementary
Mann Elementary
Maywood Hills Elementary

Mercy Housing Northwest
Mountlake Terrace Elementary
Muir Elementary
Mukilteo School District
NAMI Eastside
Neighborhood House
North Creek High School
Northgate Elementary
Northshore School District
Olivia Park Elementary
Pacific Science Center
PAWS
Project Girl
Rockwell Elementary
Rose Hill Elementary
Seattle Children's Hospital
Alyssa Burnett Adult Life Center
Serene Lake Elementary
Silver Lake Elementary
Sunny Hills Elementary
Terrace Park
UW Bothell Safety and Emergency Preparedness
UW Bothell Sustainability
View Ridge Elementary
Voyager Middle School
Washington Alliance for Better Schools
Westhill Elementary
Whittier Elementary
Woodin Elementary
Woodmoor Elementary

INTERACTIVE MEDIA DESIGN

Bloodworks NW
Imagine Children's Museum
Rooted Leaf Agritech
UW Bothell Sustainability

INTERDISCIPLINARY ARTS & SCIENCES

21 Acres
Adopt-a-Stream Foundation
Alba Painting and Coating
Bainbridge Island Art Museum
Bluerigger/Kinivo
Bothell Municipal Court
Bothell-Kenmore-Kirkland Reporter
Burke Museum
Carpapapa Auto Group, LLC
Carpenter Wellington
Causey's Learning Center
City Hall for Seattle
City of Bothell
City of Kenmore
City of Redmond
City of Seattle's Office of Immigrant and Refugee Affairs
Cube Insulation
Dean Standish Perkins & Associates
Din Tai Fung
Dotmote Labs
Duwamish River Cleanup Coalition
Edmonds School District
ENSO
Everett Gospel Mission Women's Shelter
Farmer Frog
Forterra
Friends of North Creek Forest
Gambian Talent
GlobaltoLocal
Golden Financial Exploration Association
Green Kirkland Partnership
Her Campus UWB
Homage Senior Services
Hooli Home Seattle Inc.
Husky Herald
Interim Community Development Association
International Examiner
King County Department of Nature Resources and Parks
La Raza del Noroeste
Lake Advocates

Latino Educational Training Institute (LETI)
Makah Tribe
McKinley Irvin PLLC
Molina Healthcare
NOAA
Northshore School District
Northwest Film Forum
Northwest Passage Consulting
Puget Soundkeeper Alliance
Rainbow Learning Academy
Real Change
Redmond Reporter
Rent Mason Bees
Right 2 Survive
Seattle Childrens Center for Diversity and Health Equity
Seattle Children's Hospital Alyssa Burnett Adult Life Center
Seattle Christian Schools
Seattle Municipal Court, Probation Department
Seattle Parks and Recreation
Seattle Public Utilities
Snohomish County Elections and Voter Registration
Songaia Cohousing Community
The Borgen Project
The Seattle Globalist
U Wave Radio
UTSAV
UW Bothell OE/HR
Vida Agency
W Creative
Washington State Legislature

NURSING & HEALTH STUDIES

City of Bothell
Alzheimer's Association
Bloodworks NW
City of Bellevue Fire Department
Cocoon House
Community Health Worker Coalition for Migrants and Refugees (CHWCMR)
Domestic Violence Services of Snohomish County
Downtown Emergency Service Center (DESC)
Edmonds School District/ Foundation for Edmonds Schools
Everett Housing Authority
Evergreen Health

Full Life Care
HealthPoint
Inside Health Institute
Latino Educational Training Institute (LETI)
Lifelong
Mercy Housing
Midwives Association of WA State
Mt. Baker Planned Parenthood Bellingham
NAMI Eastside
Neighborcare Meridian Seattle
Providence Regional Medical Center
Public Health - Seattle & King County
Seattle Children's Hospital
Seattle Children's Hospital Alyssa Burnett Adult Life Center
Swedish
Toxic Free Future
UW Bothell Counseling Center
UW Bothell Health and Wellness Resource Center (HAWRC)
UW Bothell Recreation and Wellness
UW Bothell Safety and Emergency Preparedness
Washington State Hospital Association
YWCA Angeline's Day Center for Women and Night Shelter
YWCA Family Village Apartments
YWCA Pathways for Women
YWCA Seneca Emergency Domestic Violence Shelter
YWCA Trinity Place Reunification Shelter

SCIENCE, TECHNOLOGY, ENGINEERING & MATHEMATICS

21 Acres
350 Eastside
AD Lightnings
Agilysys
Airship
Airship Industries, Inc.
Airship VMS
Alibaba Group
Allstate Insurance
Altruista Health
Amazon
Anxious Software Inc.

Appollo Video Technology
Apptio
Astronics
Avanade
Aviation Supplies and Academics
B Town Web
Boeing Company
Cascadia College
Chateau Retirement Communities
City of Kirkland Public Works
City of Seattle Information Technology Department
Clapped
CloudMayo
Collins Aerospace A United Technologies Company
Computing for All
Computing Kids
Cybertracker
DAIS
Dassault
Digital Futures Lab, UW Bothell
Doosan GridTech
EagleView Technologies
Elcon Associates
EmpowerPack
EOSpace, Inc.
Expedia
Expeditors International
F5 Network
Facebook
Farmer Frog
Fast Enterprises
Fujifilm SnoSite
Gavin Flying
Green GrubBox
Hardsuit Labs
IBM
Idea Trek
Kai Venture LLC
Kaji Inc.
Kenmore Middle School
Liberty Mutual
MediaPRO
Microsoft
Motorola Solutions Inc. (MSI)
MuSigma
Never Again Tech
Nike Inc.
Nintendo of America
Noonum
Northway Aviation
OfferUp

Oracle
Pacific Northwest National Laboratory PNNL
People Power Company
Philips
Philips Healthcare
Premera Blue Cross
Puget Soundkeeper Alliance
Quincy Farms LLC
Ripl
SAP Concur
SCI Solutions
Seattle Children's Hospital
SeeAlgo LLC
Shanghai Restaurant
Siemens Healthlineers
Sirion Labs
Smartsheet
Snohomish County Office of Energy and Sustainability
Sofy.ai
Sonic Concepts
Sonosite
Sound Salmon Solutions
Starbucks
Starbucks Technology
STI Optronics
Super Wholesale Distributor
Synergistics
Tableau Software
TableSafe
Talos-AI
Telesystem/Microsoft
Tethers Unlimited Inc
The Energy Authority
The Next Phase, Inc/ MedIntelliBase
The Swiftpath Program
The Walt Disney Company
T-Mobile
Unity Technologies
UW Bothell EE Lab
UW Bothell Sustainability
UWB
UWB EE Lab
Ventec Life Systems
Visa
Vision 13
Wealth front
Winfam Real Estate (Winfam Investments) LLC
Xemelgo
Yakima Chief Hops
YellowJET Aviation
YellowPalace Investments
Zulily

CONTRIBUTORS

PRINT DESIGN

Sana Iqbal, Lead Designer
Anna Jansen

EDITORS

Kara Adams
Anna Jansen
Layla Taylor

WRITERS

Douglas Esser
Sharon Salyer

PHOTOGRAPHERS

Jody Early
Jin-Kyu Jung
Rafael Silva
Mark Stone

CONNECT

[UWB.EDU/COMMUNITY-
ENGAGEMENT](http://UWB.EDU/COMMUNITY-ENGAGEMENT)

ON THE COVER

Burke Museum archives,
ACT service project at
Viva Farms, Population
Health students
demonstrating CPR with
Bellevue fire department,
BHLTH students visiting
Brightwater Treatment
Plant.

