

A Primer on Faculty Governance at UW, Bothell

Authors:

Sandeep Krishnamurthy, GFO Vice-Chair
Carole Kubota, GFO Chair

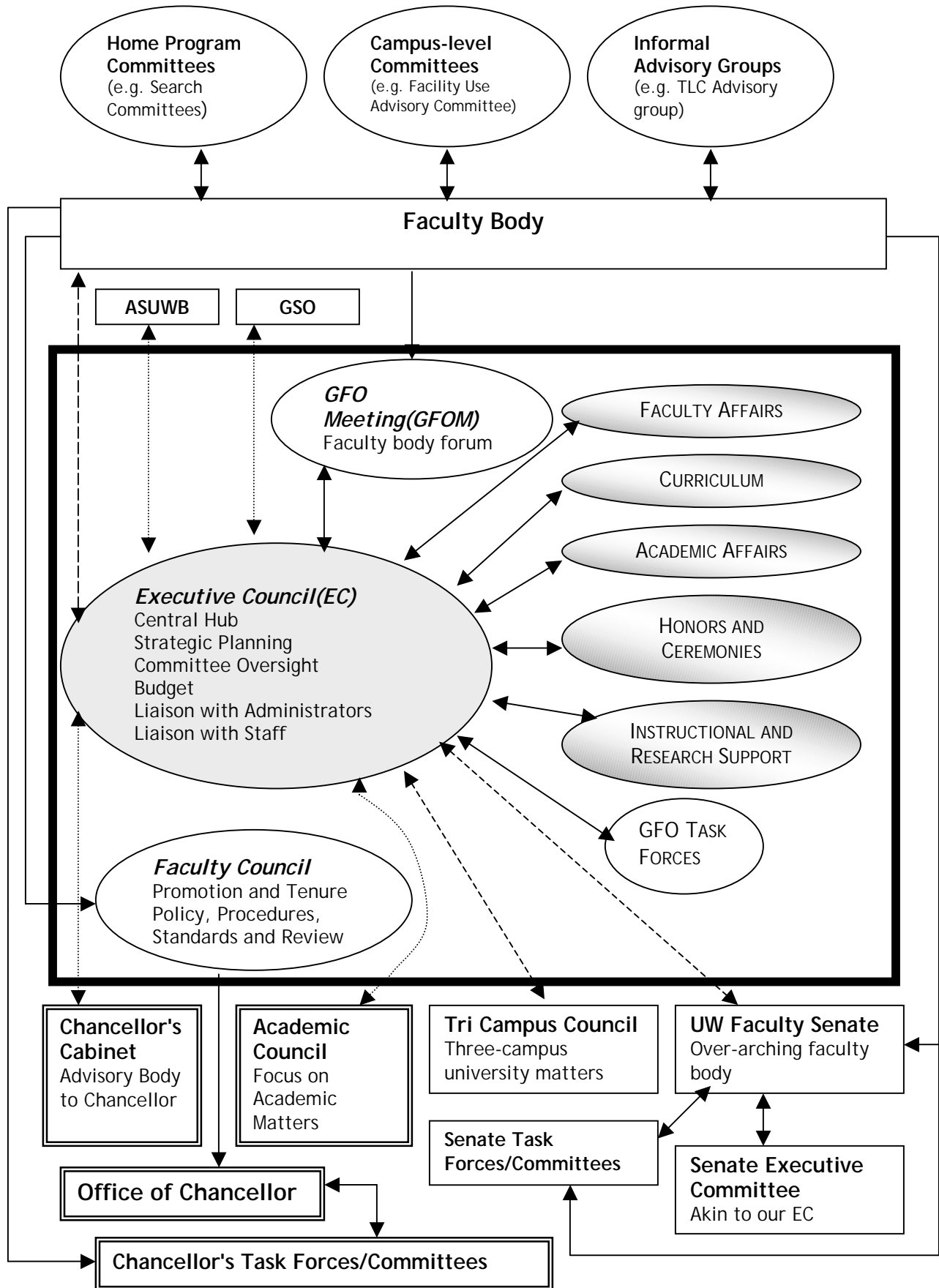
in consultation with the EC:

Business	Patricia Kelley
CSS	Frank Cioch
Education	Andrea Anderson
IAS	Linda Watts
Nursing	Mary Abrums

November 2002

Purpose of this Document:

This document seeks to explicate the current faculty governance structure to its constituents, i.e., faculty. This is not a proposal for change of any sort in the faculty governance structure. This document is expected to be used in major conversations about faculty governance structure and service.



How to read this figure:

1. The UW, Bothell faculty body elects the GFO Chair and Vice-Chair. The person who serves as a Vice-Chair in one year becomes the Chair the subsequent year.
2. The large, darkly bordered box shown in the center of the Figure depicts all GFO committees and forums.
3. The EC is the key representative body of the GFO. It consists of elected representatives from each program, the Vice-Chair and Chair of the GFO. The Vice-Chair of the GFO chairs the EC. Each elected representative serves for two years. Each academic program/elected representative shall have mechanisms for obtaining input that is representative of the opinions of the program faculty. Procedures for electing program representatives are at the discretion of the individual program.

All issues on which the UWB handbook requires a full faculty vote will be decided by such a vote. If a majority of the EC dissents on an issue, it requires a faculty vote. Of the remaining issues, the EC has discretion regarding EC or full faculty vote. At any time, an issue may be moved to a full faculty vote or back to committee for further development.

4. The committees shown in the shaded ellipses on the right hand side of the large, darkly bordered box are all standing GFO committees (i.e., are faculty committees which are constituted every year)-
 - a. The Faculty Affairs committee is charged with supporting faculty in their quest to maintain a high quality professional life, including the highest quality scholarship and the highest academic standards. It organizes the faculty retreat and the Distinguished Speaker event.
 - b. The mission of the Curriculum Committee is to review all course and programmatic changes proposed by the academic programs of the campus. It plays a vital role in reviewing new programs.
 - c. The Academic Affairs Committee provides general guidance to faculty and administrators regarding the interpretation and administration of the academic regulations of the campus. This committee handles student petitions and has been instrumental in the creation of the academic integrity document.
 - d. The Honors and Ceremonies Committee is charged mainly with identifying student candidates for commencement speaker and for other student honors.
 - e. The Instruction and Research Support Committee is responsible for general oversight of instruction and research issues.
5. The Faculty Council is the committee charged with looking at specific Promotion and Tenure cases after the candidate's Promotion and Tenure Committee and Program Director have reviewed the dossier. In addition, the Council is charged with reviewing promotion and tenure policy, procedures and standards. It is answerable to the Office of the Chancellor.

6. The EC may also appoint task forces to look at timely matters.
7. The GFOM is the forum where all faculty members gather to discuss important faculty-related matters. The Chair of the GFO organizes the GFOM.
8. UW, Bothell faculty members also participate on committees that are appointed by the administrators of the campus. On our campus, there are two important advisory bodies: the Academic Council and the Chancellor's Cabinet. The Academic Council is devoted to discussion of academic matters and is currently chaired by the Vice-Chancellor. The Chancellor's Cabinet is an advisory group to the Chancellor. The GFO Chair and Vice-Chair are invited to both these bodies.
9. UW, Bothell faculty members also serve on committees at UW, Seattle. The UW, Seattle Faculty Senate is the over-arching faculty governance body. The UW, Bothell faculty body elects three senators to this group. In addition, the Chair of the GFO serves on the UW, Seattle Senate Executive Committee as an *ex officio* member with vote. Some faculty members may also choose to serve at their discretion on other UW, Seattle Faculty Senate committees and task forces.
10. The Faculty Council on Tri-Campus Policy is a body devoted to discussion of matters related to the three-campus structure of the UW. It consists of two members from UW, Seattle, two members from UW, Bothell and two members from UW, Tacoma. The members from UW, Bothell are elected from the faculty body. The Vice Chair of the GFO serves on this council as an *ex officio* member with vote.
11. UW, Bothell faculty members also serve on their home program committees. This service could include (but not be limited to) search committees as well as committees to handle student petitions, admissions and curriculum issues.
12. UW, Bothell faculty members also serve on informal advisory groups. These groups are initiated mainly by academic staff members who feel that they need a group of faculty members advising them.
13. UW, Bothell faculty members also serve on other campus-level committees that require joint decision-making. A good example of this is the Facility Use Advisory Committee that focuses on matters related to the use of the physical facility.
14. Wherever relevant, the EC works with the Associated Students of the University of Washington, Bothell (ASUWB) and the General Staff Organization (GSO).
15. This structure is in place to facilitate shared governance. This is a process that requires that faculty, staff, and administrators collaborate on decisions related to strategic planning and budgeting. Shared governance requires consultation among all parties in matters relating to academic standards and curriculum; student admissions; appointment, promotion and tenure of faculty and selection and appointment of administrators.