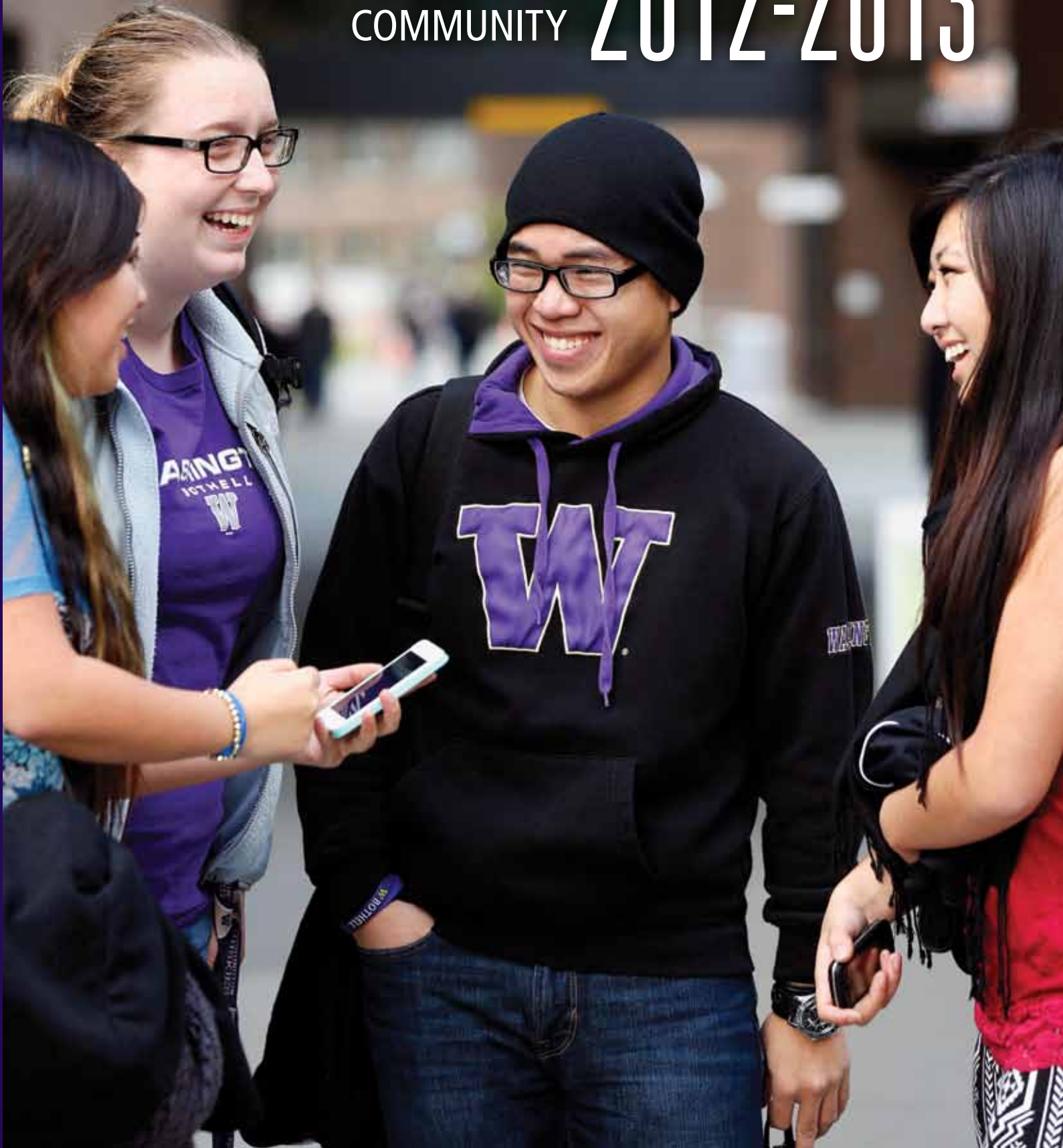




UNIVERSITY *of* WASHINGTON | BOTHELL

REPORT to the
COMMUNITY

2012-2013



REPORT to the COMMUNITY 2012-2013

UW BOTHELL MISSION

UW Bothell holds the student-faculty relationship to be paramount. We provide access to excellence in higher education through innovative and creative curricula, interdisciplinary teaching and research, and a dynamic community of multicultural learning.

CHANCELLOR

Bjong Wolf Yeigh

UW BOTHELL 2013-14 ADVISORY BOARD

Richard Shea, Chair	Entrepreneur
Bill Abbott	Coldwell Banker Commercial Real Estate
Fariba Alamdari	The Boeing Company
Mark Ericks	Deputy County Executive Snohomish County
Lou Gray	Co-Founder and CEO SEC Live
Anoop Gupta	Microsoft Corporation
Jeffrey Hanley	The Boeing Company
Deborah Knutson	Knutson Strategies
Wendy Lawrence	Retired U.S. Navy & NASA Astronaut
Bob Leach	D.A. Davidson & Company
Jud Marquardt	LMN Architects
Jens Molbak	Molbak's
Luis Navarro	Port of Seattle
George Northcroft	General Services Administration
Bill Ptacek	King County Library System
Jim Reed	Banner Bank
Susan Sigl	Consultant
Preston Simmons	Providence Regional Medical Center
Renee Sinclair	Apple, Inc.
Carl Zapora	Verdant Health Commission

UW BOTHELL 2013-14 ALUMNI COUNCIL

Michelle Gamboa, Chair	Krystle Minerich
Sarah Amos Bond	Alyssa Nevala
Melody Carrington	Stacy Ottman
Mike Collins	Joe Santos
Leiann DeVelder	Jeff Siegel
Annette Floyd	Tal Singh
Mary Howisey	Curtis Takahashi
Michelle Huynh	Hillary U
Brandon Iwasaki	Melissa Watkinson
Mandy Knudtson	Jenn York
George Lampe	

Publisher	Richard Penny
Editor	Laura Mansfield
Print Design	Paul Huereque
Writer	Stacey Schultz
Photography	Brian DalBalcon Marc Studer

Please send any questions or comments about this report to advancement@uwb.edu.



If you wish to receive UW Bothell communications online instead of in print, contact us at advancement@uwb.edu.



WELCOME

AN UPDATE FROM THE CHANCELLOR AND ADVISORY BOARD



Bjong Wolf Yeigh



Richard Shea

Dear Friends

Thanks to you, this past academic year was an outstanding year of growth and accomplishment at the University of Washington Bothell. We are truly grateful for your continued generosity. Your contributions have led to the creation of new scholarships and student support funds to ensure that UW Bothell students can focus on their academic success instead of worrying about how to make ends meet.

In the last year, your generous support has allowed us to complete the construction of the Sarah Simonds Green Conservatory and the Veterans Memorial Archway, which marks the transition of our veteran students from military to academic life. The \$68 million Science and Academic Building (Discovery Hall) is nearing completion and is scheduled to open in fall 2014. The campus also opened Husky Hall, which centralizes key student services under one roof.

It has been a year of academic achievement on our campus. Two UW Bothell students, one faculty member and one staff member received prestigious Fulbright Awards in 2013. Other student successes from this past year included: the Coro Fellowship in Public Affairs; Clinton Global Initiatives Fellowship; Mary Gates Venture Scholarship and the Mary Gates Leadership Scholarship. We also launched four new degree programs!

In the wake of all this success, we also said good-bye to a longtime friend and leader, former Chancellor Kenyon S. Chan. Many of these accomplishments and the relationships we have forged with you are the result of Dr. Chan's vision and commitment to this campus.

Your financial support allows us to invest in students, programs and research that strengthen our communities and fulfill needs in our region. There are many places you could choose to share your time, talent, and resources. We are very grateful that you have chosen UW Bothell as one of your priorities.

In the pages ahead you will read some examples of how you have changed lives at UW Bothell—from supporting students who are the first in their families to attend college to enabling faculty to engage in innovative and relevant scholarship.

Thank you for all that you do for the University of Washington Bothell.

Sincerely,

Bjong Wolf Yeigh
Chancellor

Richard Shea
Advisory Board Chair

▶ **4,605**
Students (74% enrollment growth since 2009).

▶ **91%**
of UW Bothell students are from the state of Washington.

▶ **46%**
of first year students are the first in their families to attend college.

▶ **UW BOTHELL**
welcomed 29 new faculty in 2013, its largest faculty class ever.

▶ **NEW DEGREE PROGRAMS IN 2013:**
Interactive media design, health studies, cyber security engineering and mathematics. Coming in 2014: accounting (MS), chemistry, climate science and policy, computer engineering, electrical engineering, and nursing BSN.

YOUR SUPPORT AT WORK

A SNAPSHOT OF
STUDENT AND FACULTY
ACCOMPLISHMENTS

► On the following pages, learn how your support is transforming lives and creating opportunities for “big ideas” for Huskies at home and around the globe.

“Working in natural resources, parks or in academia - all of those positions are interesting to me.”

ELLIOTT CHURCH, UW BOTHELL GRADUATE

Alumni Elliott Church Takes UW Bothell Research to Graduate School

ELLIOTT CHURCH, who graduated from UW Bothell in 2013 with a degree in restoration and conservation ecology, maintains strong ties to the school.

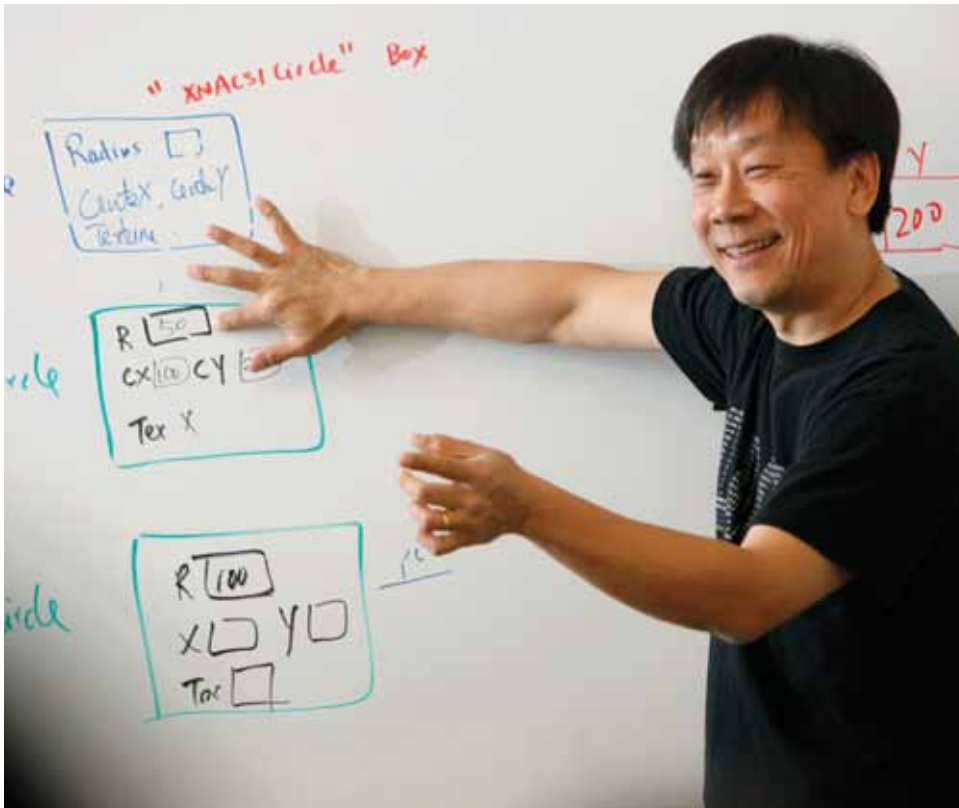
At UW Bothell, Church and another student worked closely with Professor David Stokes, faculty in Interdisciplinary Arts & Sciences, on research in St. Edwards State Park in Kenmore where they examined the invasiveness of English Holly. His work with Stokes resulted in the submission of a paper for publication in the journal *Northwest Science*.

Now as a new graduate student at UW's College of the Environment, Church relies on Stokes as one of his research advisors for his master's thesis. Church also has maintained

his connection to UW Bothell as part of the team who oversees the function of the North Creek wetlands. “I've gotten to see firsthand the UW Bothell restoration project,” he says. “It's great to see the methods and the processes at play.”

Church gives credit for his accomplishments to the Office of Research, which provided him with the UW Bothell Founders' Fellowship. “Their financial support for my undergraduate research made it possible for me to take the time to go to St. Edwards Park and collect the data,” he says.

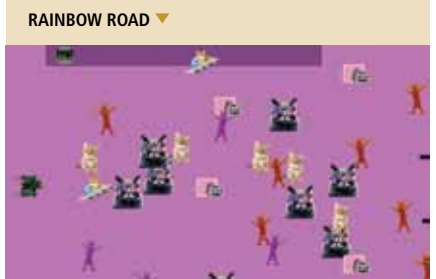
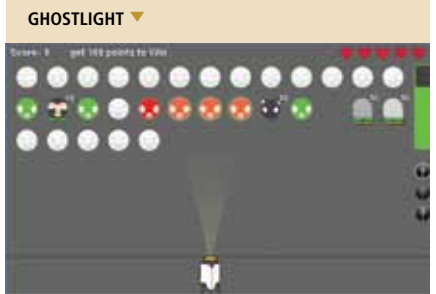
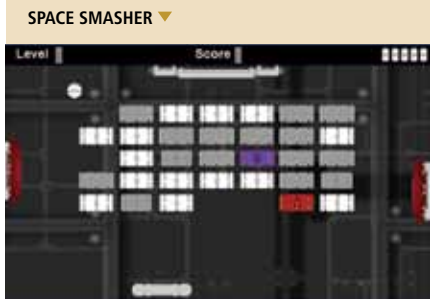
As he begins working towards his graduate degree, Church says he can see a future filled with career possibilities. “Working in natural resources, parks or in academia - all of those positions are interesting to me,” he says. **W**



“It was all done by students. Without them, none of the games would be there.”

KELVIN SUNG, UW BOTHELL PROFESSOR OF COMPUTING AND SOFTWARE SYSTEMS

▶ VIDEO GAMES DESIGNED BY STUDENTS



UW Bothell CSS Professor Kelvin Sung Makes Intro Programming More Fun for Students

WITH HIS STRONG PASSION for computer science, UW Bothell professor of computing and software systems Kelvin Sung has set out to change the way many students learn the basics of computer programming. “In introductory programming courses, the content tends to be relatively dry and abstract,” he says. Professors often learned the material this way themselves, he says, but for students living in a highly technological society, the content just isn’t relatable.

Sung, whose background is in computer graphics and video game programming, has studied whether the use of video games to teach basic introductory programming concepts would be more fun and engaging for students. “We have demonstrated this to be a very successful approach,” he says. Now, with a grant from the National Science Foundation, he is working on creating teaching tools for any professor, even those without a background in this area, to use video games in their introductory programming classes.

Sung is working closely on this project with Jason Pace, director of UW Bothell’s Digital Future Lab. Together with their students who are the designers, artists, and programmers of the prototype games, they meet once a week to review their progress and share notes.

The work is challenging, Sung says. Given that the professors teaching the classes will not have a background in building video games, the material needs to be relatively easy to work with. The second challenge, he says, is to make the games open-ended so that once students master the basic concepts, they can continue to build different versions of a game and expand their knowledge base.

The group has been working on this grant for more than a year. When the games are completed, they will be tested in classrooms throughout the region and on the east coast. “We have five games going right now, and I did zero programming,” says Sung. “It was all done by students. Without them, none of the games would be there.” **W**

UW Libraries Research Award Winner Credits UW Bothell's Interdisciplinary Approach

FOR RENA KAWASAKI, winner of the 2013 UW Libraries Research Award, finding her UW Bothell thesis project began with a job translating 1946 newspapers from old Japanese into contemporary Japanese and then into English.

While working on this project for credit during winter and spring quarters, Kawasaki became interested in how language changes over time and how that change implies immigrants' adaptation. She decided to write her thesis using material she had translated from the newspapers.

Kawasaki says she appreciates her unique experience at UW Bothell. "I got to do really interdisciplinary research," she says. "That made it a very well-rounded research project."

Kawasaki graduated from UW Bothell with a degree in community psychology and now works for the Hokubei Hochi Foundation, continuing



the work of translating newspapers and digitizing the translations for the University of Washington website. **W**

UW Bothell Senior Keith Rawson Specializes in Bioinformatics

KEITH RAWSON, a senior at UW Bothell, found his calling in the field of bioinformatics, which is the science of collecting and analyzing complex biological data such as genetic information.



Last fall Rawson, who is majoring in Computer Science and Software Engineering, took two classes in bioinformatics. "Those both just really kind of created a spark, and I jumped on a couple of research projects."

He is currently working on a research project in which he is developing a computer program to analyze a large biological data set. After he graduates, he hopes to work at a biotechnology company in Seattle and then go back to school to specialize more in his chosen field.

The opportunities he has had at UW Bothell for research "are right in line with what I want to do with my career," he says. He is earning some electives credit for his work, but mostly he says, "It's been a lot of fun." **W**

▶ UW BOTHELL FAST FACTS



UW Bothell is the largest of the five branch campuses in the state of Washington

UW Bothell received over \$12.5 Million in private contributions that support student programming and faculty research.



40 students were granted privately funded scholarships as a result of the generosity of UW Bothell donors.

UW Bothell students received a record number of merit scholarships in 2012-2013, including two student Fulbright Awards.



46% of first year students are first-generation students.

Discovery Hall, home of UW Bothell's School of STEM, will open for classes in fall quarter 2014.



1,058 individuals, 29 foundations and 42 corporations and organizations support UW Bothell.

More than 180 companies participated in on-campus recruiting events.



60% of all undergraduate students receive financial aid. Just over a quarter of UW Bothell undergraduates are Husky Promise recipients.

About three-quarters of all UW Bothell faculty provided undergraduate research opportunities to students.



“We’re at a moment in our history and our politics where our public discourse is increasingly oriented toward stories.”

GWEN OTTINGER
UW BOTHELL ASSISTANT PROFESSOR



UW Bothell’s Gwen Ottinger Makes the Case for Environmental Justice

UW BOTHELL Assistant Professor Gwen Ottinger focuses not only on issues of environmental justice, but also on how such inequities are presented. “We’re at a moment in our history and our politics where our public discourse is increasingly oriented towards stories,” she says. “So people who are trying to be persuasive, from politicians right down to scholars, are having to think about how to package the information they have to offer.”

She is currently working with UW Bothell’s Jason Pace, director of the university’s Digital Future Lab, on an interactive media tool that will highlight information from the Environmental Protection Agency’s Toxic Release Inventory, a national database of information about toxic chemical releases to the air, water, and land. The school was one of eight chosen to partner with the EPA on ways to increase

public awareness of toxic chemical releases around the country.

“There aren’t as many tools for telling stories with data as there are for collecting the data,” she says. “I’m really interested in helping create better tools to tell the story. This collaboration with the Digital Future Lab is a first step at taking a big quantity of data and telling a story with it.”

The project, which is just getting off the ground, includes student interns building the data visualization tool. Ottinger and Pace hope to make the information easily accessible by allowing users to click on areas of a map, for example, and see visuals that reveal demographics of race and income as well as toxic release data.

Their hope is that this format will tell the story of environmental injustice quickly and powerfully. “If you are a person of color in the United States, you

are more likely to have a toxic waste dump or other kinds of environmental hazards in close proximity than you would if you were white,” she says. “You can make a similar argument for low income communities and more affluent communities.”

In addition, Ottinger works with students in her environmental justice class on using different forms of story telling, such as the argumentative essay or narrative non-fiction. She has also recently published an academic book of research on how members of a Louisiana community clashed with engineers and scientists from a neighboring oil refinery over the potential health and safety risks posed by the facility.

“It’s worth thinking about these different genres as part of a toolbox and deciding what point lends itself best to what genre,” she says. **W**



UW Bothell's Karam Dana Explores Religious and Political Identity Among American Muslims

AS A RESEARCHER, UW Bothell Assistant Professor Karam Dana doesn't shy away from sensitive topics. His work focuses on issues of religious and political identity among Muslims in the United States and in the Middle East. "Due to the sensitivity of the topics I research, write about and work with, I have to utilize authoritative evidence in terms of the arguments that I make," he says. "I have to be very careful."

In 2007, Dana who was then teaching at Harvard University, teamed up with University of Washington Associate Professor Matt Barreto on a research project called the Muslim American Public Opinion Survey, which focused on

patterns of social, civic, and political participation among Muslim Americans. The project spanned more than 22 metropolitan cities in the United States and it won the 2009 Best Paper Award in the Race, Ethnicity and Politics category of the American Political Science Association.

To continue this work, Dana has created a research initiative at UW Bothell to understand the experiences of other religious communities throughout history in the U.S. to better understand the challenges that currently face American Muslims. He is working toward a series of in-depth interviews of two or three dozen Muslim leaders in the Pacific Northwest and is also planning

“Whatever happens, we have a very civil conversation,” he says. “This is the job of an educator.”

KARAM DANA

UW BOTHELL ASSISTANT PROFESSOR

to do another national survey of Muslim Americans, with data starting from this region.

His other main focus is in the Middle East, where he studies people's political attitudes. "One of my ongoing projects in the Middle East is called MEPOP, Middle East Public Opinion Project," he says. "This project has just started over the summer in the Palestinian territories to measure what people think in relation to the Oslo Accords that were signed by the Palestinians and the Israelis, 20 years later."

He is also exploring the favorability of western societies to Palestinians, distinguishing between the people of those countries and their governments. While the results are still preliminary, Dana says that there is a clear distinction between less positive notions about the U.S. government and more friendly feelings about the people of the United States. "To me that's very significant," he says.

Dana brings his ongoing research into his classes and asks students to discuss the results. "Students engage in these types of questions because it is real research that is happening right now." He says his students' observations help move his research along, effectively making their participation part of the research itself.

Another important aspect in Dana's classes is a sense of safety so that students feel comfortable exploring these topics. Unless a student needs to record a class for learning purposes, he prefers that people do not tape classes so students can speak more freely. "Whatever happens, we have a very civil conversation," he says. "This is the job of an educator." **W**

UW BOTHELL

THE YEAR IN REVIEW

FALL 2012

4,100 = Fall 2012 enrollment

DIVERSITY

43% students of color **49%** first-generation students

ACCESS

39% of students received the Husky Promise **30%** of students came from Snohomish County
60% of students came from King County **91%** of UW Bothell students came from the state of Washington

STUDENTS

139 veterans returned to school at UW Bothell **275** students move into Campus View and Husky Village apartments.



UW Bothell continued its record growth. The Class of 2016 was one of the most diverse in the nation.

WINTER 2013



The Student Sports and Recreation Complex opens



UW Bothell welcomes the School of Science, Technology, Engineering and Math (STEM)



Construction continues on the \$68 million Science and Academic Building (now named Discovery Hall).

SPRING 2013



The Veterans Archway is dedicated



Ron Tilden receives the Distinguished Teaching Award



Recruiting begins for UW Bothell's largest faculty class to date; 29 new faculty are hired.



Bjong Wolf Yeigh is selected as UW Bothell's third chancellor

SUMMER 2013



UW Bothell graduates its largest class to date: 1,400 students receive degrees during the university's 22nd commencement ceremony.



The Sarah Simonds Green Conservatory opens.



Chancellor Kenyon Chan retires after six years at UW Bothell.

NURSING

A SNAPSHOT OF ACCOMPLISHMENTS



UW Bothell's David Allen Leads Major Expansions in the Nursing and Health Studies Program

FOR DAVID ALLEN, director of UW Bothell's Nursing and Health Studies Program, the last year has been about turning opportunities into reality. The program is launching many new initiatives in both its Bachelor of Science in Nursing (BSN) offerings as well as kicking off a popular new degree in public health. Allen says the school has become a leader in the state in upgrading education for nurses and preparing students to fill roles throughout the region's burgeoning health care field.

Certainly notable is a new track being offered to first year students. Since its inception in 1992, the UW Bothell BSN has only been available to students who were already licensed nurses. Starting this fall, a cohort of 30 students is participating in a new First Year Track program through a cross-campus



David Allen

partnership with Everett Community College. In the First Year Track program, students spend their first year on the UW Bothell campus completing their nursing science prerequisites along with general education classes. The following two years are spent at Everett Community College where they earn their associate degree in nursing. After passing the state's licensing exam, they return to UW Bothell to complete the coursework for a BSN.

Allen says that the change came in part to help retain students at UW Bothell as well as to continue the nursing program's mission of increasing accessibility to students who want to earn a BSN degree. "We felt that the First Year

Track was doing two things at once: It was supporting the retention of Bothell students and it was another route to try to make it easier for students to get the BSN in four years," he says. "So it was kind of a win-win from that point of view."

But there have been challenges. "The hardest part probably is curricular, trying to get all the courses available here that meet the community college requirements for their prerequisites," he says.

Other departments have helped out. "We've had a huge amount of support from the School of STEM (Science, Technology, Engineering and Math) in their biology and chemistry courses. We are also developing a communications course and an Introduction to Sociology course," says Allen. "Our Center for University Studies and Programs (CUSP) and STEM have been doing huge amounts of work to make it feasible."

Other aspects, like streamlining student scholarships and records, have gone better than Allen expected. "I thought that was going to be a huge headache," he says. "It's never over until

► HOSPITALS SPONSORING UW BOTHELL BSN PROGRAM



“UW Bothell has been a leader in increasing access to higher education for nurses not only by teaching off-campus, but also by establishing a curriculum structure designed for working nurses.”

DAVID ALLEN, UW BOTHELL DIRECTOR OF NURSING AND HEALTH STUDIES PROGRAM

it's over, but on the whole I'd have to say that's gone smoothly."

Allen has also worked to expand access to the UW Bothell BSN degree by arranging for classes in Seattle for working nurses at local hospitals. "Most if not all hospitals are pushing to meet a standard of 80 percent of the nurses prepared at the baccalaureate level," he says. "In the fall I started conversations with four hospitals and the end result is the four hospitals are going to sponsor having us offer the BSN program in Seattle at Harborview." The hospitals are Harborview, UW Medical Center, Swedish and Virginia Mason.

This effort comes on the heels of a landmark 2010 Institute of Medicine report entitled *The Future of Nursing: Leading Change, Advancing Health*. The report called on academic nurse leaders across all schools of nursing to work together to increase the proportion of nurses with a baccalaureate degree from 50 to 80 percent by 2020. "Basically it made the argument that to really utilize nurses in their full capacity we needed to upgrade their education," says Allen. "At the national level that's been a big part of the conversation."

Faculty in the UW Bothell nursing program currently teach off campus in Mount Vernon and Everett, as well as on the Bothell campus. Because Western Washington University has recently

launched a BSN program, UW Bothell will shift its focus to Seattle instead of Mount Vernon. "It costs us more to teach off campus," says Allen. "In effect what the hospitals are doing is they are subsidizing those costs so their nurses get access to our degree downtown."

Allen says UW Bothell has been a leader in increasing access to higher education for nurses not only by teaching off-campus, but also by establishing a curriculum structure designed for working nurses. "Most of our students are working 30 hours or more and so we work our curricular structure out so that basically there is class one day a week," he says. "This allows them to maintain their work schedules."

This fall, the program began to expand its reach beyond nursing to public health with a new degree offering in Health Studies. Following recommendations by the Institute of Medicine that all undergraduates have access to education in public health, UW Bothell established this new degree to serve the needs of students who are interested in a variety of professions in the health care field.

Allen says the 45 students who have signed up for the major have a range of career goals. "We knew some would be heading towards health professions like medicine, dentistry, social work, and pharmacy, and it looks like a third are heading in that direction," he says. "A bunch of them are heading towards global health NGO work and the other third are all over the board."

Next fall he anticipates the program will double its enrollment to 80 students. In the meantime, the faculty is fine-tuning the curriculum as the program rapidly expands. "We have a UW Bothell alumna who is on the STEM advisory board and her expertise is workforce projections," he says. "She is meeting with the faculty to help us figure out what will the employment picture look like and what should the skill base be for that."

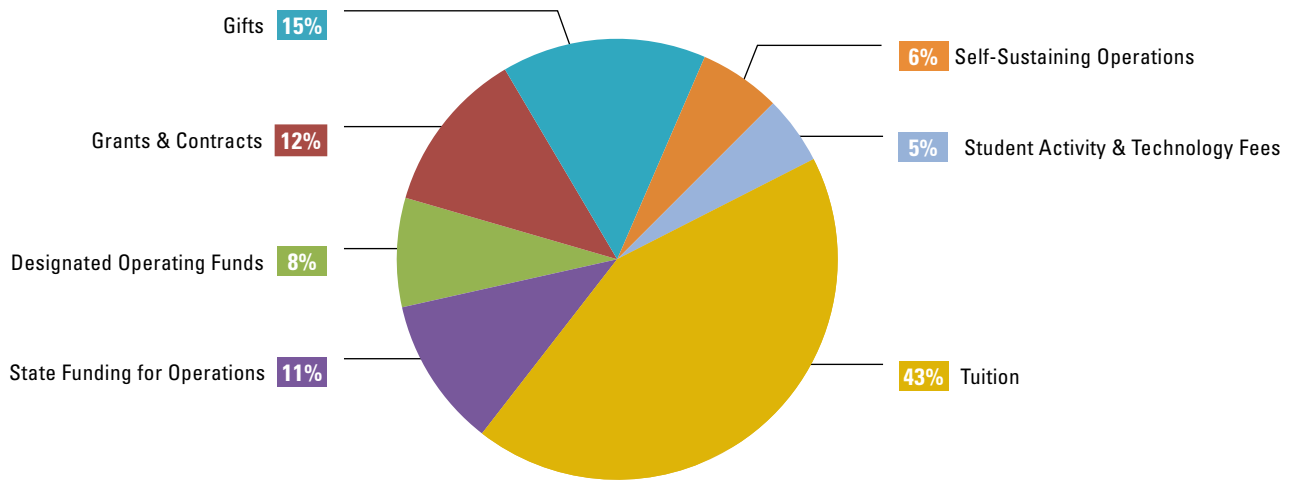
Looking forward, new changes are afoot for the Master of Nursing program. "Both the Bothell and Tacoma campuses have operated under the accreditation of the University of Washington Seattle," says Allen. "One of the things that we're doing in order to better tailor our programs to our regional needs is moving toward independent accreditation."

He says part of that process is to redesign the master's program to better meet employment needs. "It's going to be significantly different with two primary emphases," he says. "The two largest career paths that our students are on are either leadership and management or education." Those two areas will continue to be main foci of the program, which will launch in its new form next fall.

Allen says although it's very busy, it's also a really fun time to be part of the nursing program. "People are excited," he says. "Because of the rapid expansion we were able to hire four new faculty and that's been a huge bonus." With all the changes and expansions, the extra hands are surely needed. **W**



FINANCIAL OVERVIEW



Financial Statement (July 1, 2012 – June 30, 2013)*

▶ Revenue Sources	Amounts	% of Distribution
State Funding for Operations <i>(state tax support)</i>	\$9,767,574	11%
Tuition	\$37,295,663	43%
Designated Operating Funds (DOF) <i>(prior year rollover funds, indirect costs)</i>	\$7,164,220	8%
Grants & Contracts	\$10,188,626	12%
Gifts	\$12,588,930	15%
Self-Sustaining Operations <i>(auxiliary, co-location services)</i>	\$5,407,895	6%
Student Activity & Technology Fees	\$4,303,677	5%
Total Campus Revenue	\$86,716,585	100%

*Figures provided by the UW Bothell Office of Budget and Planning.



UW Bothell Legacy Award Winners Focus on Success

FOR WILLIAM (BILL) AND LYDIA ABBOTT, recipients of the UW Bothell 2013 Legacy Award, supporting the school is all about helping students. “I wanted to be more involved because I felt that I could throw down the rope for the person behind me,” says Bill Abbott, a graduate of the UW Bothell School of Business.

Bill Abbott was not a traditional student when he enrolled at UW Bothell in 2001. He had already built and sold a successful business. He says he pursued his bachelor’s degree for a personal goal and to set a good example for his children.

“After my first few classes I realized that I had lucked into a wonderful experience,” Abbott says.

Today, Abbott is an active donor and board member, who is always willing to offer his help and advice to support the school.

“I enjoy doing it. The most unique part of the experience at UW Bothell is the camaraderie of people. It is wonderful and unique! At UW Bothell people are caring, and they help you a great deal.” **W**

“I wanted to be more involved because I felt that I could throw down the rope for the person behind me.”

BILL ABBOTT

UW BOTHELL 2013 LEGACY AWARD RECIPIENT

SUPPORTING THE MISSION

CHARITABLE GIVING TO BENEFIT EDUCATION, ACCESS AND OPPORTUNITY

The University of Washington Bothell would like to acknowledge the following individuals and organizations for their generous support.

► Lifetime Support

Laureates (\$1,000,000 or greater)

Bill & Melinda Gates Foundation
Carnegie Corporation of New York
Estate of Gordon C. Green
Walton Family Foundation
Richard & Lois Worthington Foundation

Benefactors (\$100,000-\$999,999)

Agilent Technologies
Doug & Barbara Allan
Laura and John Arnold Foundation
The Boeing Company
Eli and Edythe L. Broad Foundation
Annie E. Casey Foundation
Edvance Research, Inc.
Electric Power Research Institute
Fluke Corporation
Jay and Marsha Glazer
William and Flora Hewlett Foundation
Herbert B. Jones Foundation
The Joyce Foundation
Microsoft Corporation
Tektronix
Wells Fargo Foundation

Founders (\$25,000-\$99,999)

William & Lydia Abbott
Applied Microsystems Corporation
Atmospheric Research and Analysis
Kent & Barbara Chaplin
Richard & Virginia Chappelle
Costco Wholesale Corporation
Maryel D. Duzan
Foundation of the National Student Nurses
Association
Frontier Communications
Brooks & Jean Gekler
Max E. Gellert
Steven & Jonilou Holland
Herbert B. Jones Foundation
Independent Insurance Agents and Brokers
of King County
Northshore Scholarship Foundation
Rod Proctor & Lynn Ries
Ethel Jenish Rose
Norman & Louise Rose
State Farm Insurance Company
UW Bothell Alumni Council
Verizon Northwest, Inc.
Visio Corporation
Woodinville Rotary Charitable Foundation

2012-13 Supporters

Chancellor's Club (\$1,000 - \$24,999)

John and Carla Alley
Sean P. Alley
American Legion Post 161
Anonymous
ATCO Communication Services
Hung Dang and Odette Austria
Banner Bank
Bernston Porter & Company, PLLC
Raul and Sandra Biascochea
The Boeing Company
Ralph and Doreen Boy
Kyle R. Brown
Bruce Burgett
Brett Campbell
Cascadia Community College
Kenyon Chan and Shirley Hune
Barbara and Kent Chaplin
Virginia D. Chappelle
Charles Koch Foundation
The Coca-Cola Company
Roger and Kimberly Collins
DA Davidson
The Divers Institute of Technology
Economic Alliance of Snohomish
County
Evergreen Health
Fred Hancock Post 19
Michael and Maureen Gannon
Brooks and Jean Gekler
Diane and Michael Gillespie
John and Deborah Godek
Anthony and Lisa Guerrero
HaloSource
Jeffrey and Teresa Hanley
Steven and Jonilou Holland
Hos Bros. Construction, Inc.
Michelle Huynh
Richard and Janet Hunter
Kiwanis Club of Northshore
Sandeep Krishnamurthy and
Srivani Jade
Marleigh and Harley Lang
Jud Marquardt and Connie Niva
Jessica and Brandon Mayfield
Rosemary and Jim McAuliffe
Microsoft Corporation
Sabrina and Chad C. Miller
M.O.M.S Fine Foods, LLC
Daniel M. Nelson
Nintex
Northshore Scholarship
Foundation
Steven and Lesley Olswang
Kenneth and Kimberly O'Neill
Philip and Jeanie Palm
Philips Healthcare

James Pinkelman
William and Margaret Ptacek
James and Tiffany Reed
Joseph and Sandra Ridge
Gopinath Sankaran
Randy and Melanie Serroels
Siemens Philanthropic Fund
Sierra Construction Company, Inc.
Renee and Tony Sinclair
Smartsheet.com Inc.
Stephen J. Smiles
SonoSite, Inc.
Spiration
Veterans of Foreign Wars
Post 2995
Washington Biotechnology &
Biomedical Association
Washington State Employees
Credit Union
Westward Fishing Company
Waste Management
Benjamin P. Wiselogle
Woodinville Rotary Charitable
Foundation
Dean and Gretchen Young

Annual Supporters (\$1 - \$999)

104 Apartments
192 Brewing Company
Alexander R. Abbott
Active Network
Dana Vahey Adams
Taylor Adams
Sara J. Adamski
Adobe Systems, Inc.
Evelina L. Agdeppa
Davide Agnello
Emmanuel Aguilar
Ramish Ahmad
Adegbola B. Ajayi
Angelia L. Albright
Sam E. Al-Khoury
Brieanne V. Allen
David Allen
David G. Allen
Selina K. Allen-Clark
Nathan Ira Alley
Allyis
Yousef M. Altaurifi
Bryn E. Amell
American Legion West Seattle
Post 160
Amgen Foundation, Inc.
Chris Anderson
Christian Anderson
Emily R. Anderson
Erica D. Anderson
Gary K. Anderson

Richard and Catherine Ang
Julie and Jeff Angeley
Todd D. Anthony
Ernie A. Antin
Cyril O. Anunobi
Melissa and Clyde Arias
Fernando M. Arnez
Sara J. Arnold
Kylani A. Arrington
Evelina Arthursson
Leslie Ashbaugh
Jeffrey Asmus
Hazelina Asuncion
Sandalyne and Demir Ateser
Calvin and Cindy Atkin
Taylor A. Atkinson
Sheryl L. Aubol
Lori Aziz
Marianna I. Baghdasaryan
Dana N. Bakkensen
Linda and Charles Bale
Samiaji Bangkittashki
Scott W. Barker
Jenya E. Barrick
Josh Barry
Christina W. Bartolome
Nina E. Bayer
Jill and Glenn Bayha
Christopher D. Beatty
Maia S. Beatty
Diana K. Beaulaurier
Bee Good Marketing
Bernadette and Ron Belter
Barbara C. Bengtsson
Bruce Bentley
Terance A. Berg
Daniel Berger
Scott and Veronica Bernhard
Leyla L. Beyaz
David and Janelle Beyer
Roopa K. Bharti
Sujit J. Bhavsar
Amy M. Bishop
Kay and Ben Black
Gregary M. Blackner, M.D.
Michael Blancarte and Adele
Archibald
Juan Blanco
Michael W. Block
Claire E. Blubaugh
Igor Bodi
Lisa M. Boettger
Katherine B. Boland
Darci M. Bolger
Sarah A. Bond
Christopher J. Boody
Curtis and Helen Boody
Amaranth C. Borsuk

Boston's Mill Creek
Bothell Eagles Aerie 2609
Bothell Sports Clips
Anthony and Loan Bottone
Oksana I. Boun
Richard J. Bowen, Jr
David M. Boyd
Richard D. Boydston
Gwyneth R. Boyer
Helen Ann Brelsford
David A. Brent
Leslie C. Breuer
James and Debra Brischke
Alexis L. Brittain
Craig Brockett
Lawrence and Susan Broder
Sean and Christina Brogan
Brooks Biddle Suzuki
Denise Brown
Mariah Brown
Earl Z. Browne
Sherry A. Browne
Adam M. Brzycki
Kimchi Kc Bui
Breeann H. Burgos
Lauren L. Burnes
Melanie A. Burnham
Mark D. Bushbeck
Raeline Bushbeck
Jeffery and Susan Buske
Erxin Cai
Kevin B. Call
Caroline M. Calvillo
Jamie L. Camalich
Mr. Nicholas S. Camarata
Deborah Caplow
Matthew R. Carlson
Lana Carolan
Kyle L. Carrier
Marilyn J. Carruth
Floarea Catana
Colin Chadduck
Mark and Elizabeth Chan
Sheila Chang
Vue Chang
Ku Chao
Kevin M. Chapman
S. Charusheela and Colin Danby
Stephanie Chasengnou
Theresa A. Chason
Mary T. Chasteen
Neeraj Chawla
Eric Pei-Hsu Chen
Richard and Kathryn Chester
Jessica Cheung
Kim Chi Bui
Jonathan H. Cho
Pearl Choi

Joseph Chouinard
Deedee and Scott Christensen
Elizabeth Christensen
Paul J. Christensen
E. Christian
Emily A. Christian
Megan A. Christie
Terri and David Chudzik
Denny Chung
Matthew S. Chung
Elizabeth Ann Clark
Floyd Cline
Sedonia Cochran
Frank and Joan Cohee
Mike Collins
Colvin Family Charitable Fnd
John F. Comstock
Philip and Christine Conrad
Core Corporation
Paulette A. Costanza
Robert A. Costumbrado
Country Inn & Suites – Bothell
Annette and George Cox
Marilyn E. Cox
Angelo C. Cruz
Colleen Cullen and Mark Martino
Biren A. Damani
Chip Davidson
Eric T. Davis
Heather M. Davis
John M. Davis
Christina L. Davison
Lisa M. Davison
Austin D. Dean
Walter A. Deebach
Patricia A. Deisher
Suzan and Kurt Delbene
Karen R. Demmert
Joan and Ronald Detrick
Jill C. Dewald
Jacob R. Dewilde
Jashan S. Dhaliwal
Shailendra A. Dhamankar
Sanjeet S. Dhinsa
Christine M. Di Gino
Denise L. Dickinsen
Neil and Doris Dickinsen
Dick's Drive-Ins
Noel C. Diep
Julie Dimeo
Carlie Diorio
Lori A. Diskin
Pamela A. Dittrich
Nicholas Ditzler
Stacey A. Doran
Jan S. Drabek
Samba Drammeh
Betony L. Dunaway
Kym E. Dyberg
Gerry Eagle
Joseph R. Eaton
Miranda H. Eby
Kristine M. Echert
Austin D. Edge
Edmonds VFW Post No. 8870
Natalia A. Edwards
Tyrell Edwards
Jean G. Eisele
Danielle M. Endecott
Joseph E. Erickson
Whitney L. Erickson
Ernst & Young Foundation
Talia G. Escandar
Susanna A. Essilfie

Richard J. Evans
Earl Batiste and Roleta Evans-Batiste
Evergreen Healthcare
Timothy A. Everroad
Jonathan B. Eytunge
Brian and Jane Fadely
Parisa A. Farahani
Lesley Ferguson
Fey & Grey Orthodontics
Allysa N. Figueroa
Lucita Figueroa
Yon H. Fisher
William and Sally Floberg
Cynthia M. Fong
Hector M. Fonseca
Bambie S. Fontana
Rachel Ford
Jean-Esther Foronda
Peter Freeman
Jennifer R. French
Walter and Diane Freytag
Brian D. Frisbie
David J. Frye
Ying Fu
Evan G. Fujioka
Jennifer C. Fuller
Kelle L. Gaddis
Amit Gala
Michael and Charlotte Gamble
Michelle Gamboa
Valeria A. Garcia
Benjamin R. Gardner
Harsh Garhwal
Celeste Gates
Paul J. Geary
Abdi Geireh
John Gevaert
Kathleen A. Gibbons
Benjamin I. Gibson
Richard P. Gigo
David S. Goldstein
Judy Golisch
Ashley V. Good
Linda M. Gourlie
Sharon and Kenneth Grafham
Therese P. Grant
Marlene I. Grasser
Darrell and Pamela Green
Isaac N. Green
Brandi Greenleaf
Kay E. Greenwood
Jacob I. Grey
Joshua R. Griffin
Kyle P. Grubbs
Martha Groom and Daniel Grunbaum
Marcelo G. Hahn
Tanuja Gupta
Randy Hadipoespito
Elaine M. Haig
Ramzi G. Hakim
Marc F. Hall
Travis L. Hall
Robert and Mary Haller
Megan Hammond
Laura H. Han
Val J. Handfield
Stephen Handley and Patti Dinsmore
Christine Hanna
Kerry K. Hansen
Noel V. Hansen
Barbara and William Hanson
James B. Hanson

Scott Hanson
Gary B. Harris
J. Wesley Harris
Judith A. Harris
Julie M. Harris
Marcus S. Harris
Staci A. Hartmann
Todd S. Hass
Kerri E. Hatfield
Linda S. Haughton
Brian Jon Hayes
Kathleen N. Haynes
Hebert Research
James Hebert and Cynthia Sullivan
Brannon W. Heftel
Dorothy and Kenneth Heiret
Katja M. Hellmund
Sarah and Jonathan Hendrich
Matthew R. Hendricks
Silvia Y. Hendrickson
Frederic S. Hensen
Angelica Hernandez
Hans J. Herrmann
Janel Hershey
Robert and Joan Hertel
Jeanne D. Heuving
Reanna L. Hicks
Joshua D. Highland
Jamie M. Hilbert
Delaine Hill
Jeffrey D. Hill
Paul and Alice Hill
Cinnamon Hillyard
Ronald and Sharon Hirata
Loc Manh Hoang
Hans G. Hodges
Howard A. Hoffer
Philip and Karen Hofmann
Terri and Scott Hoge
John and Mary Holland
Shane C. Honanie
Ruth and Richard Honour
Samuel W. Hopkins
Janieve and Robert Hopper
Eric T. Hopson
Kathleen Horowitz
Benjamin Hou
Ignace K. Hounwanou
Christine L. Howard
Camille Howell
Mary and James Howisey
Amy X. F. Huang
Tod and Nina Huey
Hope Hultgren
Tom Humann
Kristin Hunt
Erle C. Hunter
Paul Hunter
Samantha R. Hutchison
Michelle Huynh
Lynsey A. Isaacs
Sara Ismail
Brandon G. Iwasaki
Anoop Gupta and Yumi Iwasaki
Charles and Susan Jackels
Shandra L. Jackson
Ellen B. Jacobs
Lisa Marie Jacobson
Matthew Paul Jacobson
Nancy Beaudet and Daniel Jacoby
Dan Jaffe
Anthony and Christene James
Deborah and Richard James
Diane and W. B. Janes

Tara Javadpour
Adama Jeng
Kimberly J. Jensen
Lisa G. Jensen
Megan Jewell
Qin J. Jin
Ryan Joersz
Glen John
Delois and Joseph Kinney
Brian P. Johnson
Eric A. Johnson
Kerri L. Johnson
Nancy A. Johnson
Ron Johnson and Linda Caputo
Tod Lee Johnson
Mary C. Jonasen
Deric James Jones
Deuksil Jung
Jin-Kyu Jung
Jeffrey R. Kalmanek
Ernest Kandilige
Adity Karande
Andrei Kasarda
Kaufman Chiropractic Clinic
Fumitaka Kawasaki
Susan M. Keen
Lewis and Deborah Kelly
Nicole Kelly
Andrew Kerr
Navarre Kerr
Karen Ketrner
Mohammed A. Khalid
Aliou Khan
Omair Khan
Bobbie A. Khanna
Wooyoung Kim
Yoontae and Karen Kim
Kevin King
Tiffany D. Kirk
Mandy E. Knudtson
Bertin Koala
Yuko Kobayashi
Gray Kochhar-Lindgren
Bruce Kochis and Susan Davis
Audrey Marie Kolde
Dave Kolk
Muhammed A. Kongira
Viktoriya and Lev Korsunskiy
Kostya Kortchinsky
Sonja M. Kottke
Chista Kouretchian
Andrea Kovalesky and John Mickelson
Ronald Krabill and Nancy Chupp
Kerstin F. Kramer
Andrew T. Krause
Judith Krueger
Gurpal S. Kular
Kelly Lagervall
Matthew G. Laine
Elizabeth A. Lake
Jessica Lam
Nia Lam
Mark Lamb
Rande M. Lamb
George Lampe
Debora Landforce
Joseph J. Lang
Raquel Lang and Tyson Monsaas
Joshua D. Larios
Julie K. Larson
Aida A. Lasher
Kelli K. Latham
Janice B. Laureano
Kevin Laverty and Karin Schminke

Michele and Patrick Lawson
Tri Minh Le
Jacob Leach
Robert and Kathleen Leach
Sarah P. Leadley
Maribeth Leder
Lee Johnson Chevrolet
Catherine T. Lee
Chun-Ting Lee
Ming H. Lee
Amanda N. Lehan
Mike and Deborah Leslie
Michael A. Letter
Mahala K. Lettvin
Daniel R. Lewis
Judy L. Lewis
Rashell and Clifford Lewis
Shufen Li
Paul M. Liam
Christine A. Loeffering
Janine and John Linn
Fannie M. Little
Sean Marsh and Mary Little
Carlos S. Lopez
Anne Loustau
Kathryn R. Louthain
Neil and Lesley Low
Andrew W. Lowe
Patti and Mike Lowe
Ruobo and Eliza Lu
Joseph A. Lubin
Matthew E. Lund
Rosa Lundborg
Kathleen Luu
Barbara J. Lynch
Yuet C. Ma
Tara M. Rich
Sandra and Eric Maddox
Jenny Madrazo
Ismaila Maidadi
Amy O. Maki
Ruhi Malhan
Elizabeth and Clay Malinak
Jennifer W. Manchester
Siobhan L. Mangus
Marlene Manzo
Christine M. Maramba
Dean and Gerrie Margell
Marine Corps League
Cecilia and Frank Mariner
Keri J. Marino
Melissa M. Marriott
Konrad R. Marsolek
Rose Mary
Michelle A. Matias
Richard D. Matkin
David D. Matsumoto
James H. Matthews
Patricia and David Mattsen
Maxamed I. Maxamed
Gabe A. McBride
Amy and Joe McCarthy
Jennifer K. McCaslin
Anne McCaughey
Steven W. McClaughry
Taryn M. McCormack
Janet N. McDaniel
Ian Mcdougall
Daniel J. McGuire
Matthew H. McIntire
Torrance J. McKeag
Deborah and Patrick McKenna
Vance and Debra McLane
Derek L. McLean

Jack W. McLeod
Mary A. McNaughton
Cheryl A. McNeas
Sally A. McPherson
Randall C. McRae
Judith Medina
Ami Desai-Mehta and Tushar Mehta
Lori and Gail Meldrum
Imelda J. Melendrez
Brett Melton
Raven J. Mencias
Christopher Mendez
Joseph O. Mendoza
Amen G. Mengesha
Prakash Menon
MetLife Foundation
Maxine Miceli
Andrea Miller
Janet and Donald E. Mitchell
Shaileen N. Moeller
Amaal A. Mohamed
Yassin S. Mohamed
Raamez Mohandessi
Dawn Moncalieri
Erin Monroe
Megan A. Monroe
Brent M. Montgomery
Andrew S. Monusko
Amber Moon
Jeffrey W. Moon
Kathryn and Paul Moran
Razvan Morar
Arthur and Jean Morgan
Patricia A. Morgan
Wendy S. Morgan
Andrew L. Morris
Erdenjargal Munkhbaatar
Lawrence M. Munyi
Eric Murray
Mandi L. Myers
Marcy M. Myers-Little
Arika-Ann Nadeau
Berk G. Nadir
Misty M. Nahoopii
Luis G. Navarro
Florizel M. Negrillo
Gregory and Lori Neumann
Anthony B. Nguyen
Dan T. Nguyen
Dat Nguyen
Hai Thi Nguyen
Jason Q. Nguyen
Judy T. Nguyen
Khang Nguyen
Long Nguyen
Christopher D. Nichols
Jesse R. Niebruegge
Anna D. Nikolova
Abika Nimmakayala
Nintendo of America, Inc.
Keith A. Nitta
Kevin R. Nitta
Lena A. Njie
Deborah Noble-Perry
Sara A. Normoyle
George and Gloria Northcroft
Elizabeth Norville
Jammie C. Novak
Sarah Jean Nye
Dennis and Diane Obermeier
Hayward and Victoria Oblad
Stephanie Oh
Denice and Greg Oien
Mark Y. Okinaka

Adam P. Oliver
 Clark and Rebecca Olson
 Emily A. Olson
 Greg Olson
 Lynnette J. Ondeck
 Robert McClun and Lois
 Oppen-McClun
 Andrew C. Orford
 Molly M. Ormsby
 Patricia A. Ostrum
 Josephine A. Otieno
 Gwen E. Ottinger
 Craig M. Overfield
 Yuliya Y. Ovsepyan
 Frank Ow
 Murun Oyunerdene
 Wayne S. Padcayan
 C. D. Garibay Padilla
 Josh Pan
 Carlos Paradinha
 Laurence and Shelly Parfitt
 David M. Park
 Greg Parker
 Donald J. Parsons
 Jebediah W. Pavleas
 John Hardin and Amy
 Peacock
 Rachelle R. Peebles
 Kathleen and Mark Pepper
 Michael and Brenda Pellitteri
 Ben Pennaud
 Richard and Ann Penny
 Elise Perachio
 Connie and Eugene Peterson
 Thomas Phan
 Shau C. Phang
 Phillips Consumer Lifestyle
 Phillips Medical Systems
 Erik Pierson
 Sarah L. Pietsch
 Stephanie Pipes
 Curtis M. Pitman
 Nancy A. Place
 Amanda C. Plotsky
 Ashley D. Poeppel
 Rainee E. Polin
 Kathleen Poole
 Peter C. H. Poon
 Janet L. Porter
 Shannon L. Porter
 Bradley S. Portin
 Julianne Powers
 Bakhtiar A. Pribadi
 Rebecca M. Price
 Janet Prichard
 Alana B. Prizant
 Parm Singh Purewal
 Craig and Shirley Purkey
 Jeannette and Manfred
 Quaack

Quality Care Physical Therapy
 Melanie R. Querimit
 Manoj Raheja
 Cameron C. Rahman
 Bima N. Rakhman
 Gowri Shankar and Priti
 Ramamurthy
 Ernesto M. Ramos
 Rabeka A. Randall
 Jennifer and Charles Rapuzzi
 Kathleen and John
 Rasmussen
 Joan Ready
 April A. Reagan
 Sierra I. Rediger
 Anna-Mary Reinhold
 Eli L. Reisman
 Lourdes C. Remigio
 Nicole L. Rhode
 Mariellen and Larry Rich
 Kelly C. Richards
 Kahty and Paul Richardson
 Sarah M. Rieth
 Chris T. Ritnoppakun
 Solomon J. Robbins
 Ryan and Melanie Roberts
 Tom Noonan and Eileen
 Robison
 Cassandra N. Rodriguez
 Dale and Karmen Rolf
 Michael T. Rossman
 Meredith A. Russian
 Noah Hostetler and
 Stephanie Sadowsky
 Lynette and John Sagvold
 Ali R. Sahibzada
 Youngae Sandoval
 Aloura P. Santori
 Kimiko Sasaki
 Lyamen Savy
 Emil A. Sayah
 Raymond G. Sayah
 Heidi J. Schauble
 Kathleen and Jeffery
 Schempp
 William A. Schink
 Sandra Schleinig
 Christopher S. Schmidt
 Chris Schools
 Joy L. Schuler
 Robert and Phyllis Schultz
 Carolyn M. Schumacher
 Brian J. Schunke
 Elaine and Brian Seguin
 Katherine M. Seidemann
 Polina A. Semeykina
 Barbara A. Setzer
 Ketan A. Shah
 Seth Sharp
 Timothy J. Shaver

Julie D. Shayne
 Rick and Karen Shea
 Deb Sheffield
 Geni A. Sheikh
 Richard S. Sherry
 Weijuan and Scott Davis
 Sally and Robert Shinstrom
 Udayasimha Shivaswamy
 Jeffrey D. Siegel
 Suzanne Kay Sikma
 Preston Simmons
 Henry D. Simon
 Vladislav J. Simontov
 Glenn Sites
 Lauren J. Skinner
 Aaron M. Smith
 Albert H. Smith
 Duncan E. Smith
 Elizabeth J. Smith
 Maria and Joseph Smith
 Kristopher J. Smith
 Matt Smith
 Wilma and John Smith
 Thomas and Marissa Soran
 Gary Sparks
 Mark Spilde
 Spiration Inc.
 Valery and Denis Spivey
 Thiruvallur Srikanth
 Samantha St. John
 Christian Stackhouse
 Ty Staley
 Joyce Standing
 Derek Stanford
 Shannon Stanton
 David W. Stavoe
 Jennifer O. Stawski
 Christopher F. Steele
 Rosalinda L. Steele
 Aaron L. Sterling
 John E. Stewart
 Michael and Bilin Stiber
 Mary M. Stocker
 Angela L. Stone
 Eric J. Stromme
 Sylvia M. Sturgill
 Yasin A. Sugal
 Wade M. Sugiyama
 Nicholas Sullivan
 William G. Sullivan
 Frederick A. Sundin
 Mike and Sharon Suraci
 Etsuko Suzuki
 Brendan P. Sweeney
 Terrence and Deirdre
 Sweeney
 Sarah A. Syvertsen
 Christopher A. Szarek
 Curtis M. Takahashi

Thanh L. Tang
 Angela M. Tanna
 Steve and Kari Tanta
 James Te
 Steven L. Teixeira
 Kanpong Thaweesuk
 Karon P. Thibault
 Donald G. Thomas
 Douglas A. Thompson
 Kerry L. Thor
 Ronald and Gail Tilden
 Tracy A. Timmins
 Perla Tirado
 Laretha and Joseph Todd
 Mario Todorov
 Sut Ieng Tong
 Douglas and Alison Torseth
 Peter P. Tran
 Jessica B. Trenkamp
 Thuan C. Trinh
 Jinal A. Trivedi
 Chung Tsai
 Brandi K. Tsang
 Haimanot Tsega
 Tove Tupper
 Brian Unguren
 United Way of King County
 Eduard V. Ustsiamchuk
 Rehana G. Vahora
 Dale Van Pelt
 Suzanne Vanderwerff
 Vijay K. Verma
 VFW Post 1040 Lynnwood
 VFW Post 2713
 Susan R. Vinson
 Daniel V. Vinyar
 Ruby Viramontes
 Linda L. Vivas
 Charleen M. Wade
 Kristina B. Walters
 Baijie Wang
 Jin Wang
 Johnny Wang
 Shelley L. Wangen
 Justin Warren
 Yasmin Warsame
 Washington State Employees
 Credit Union
 Brenda S. Watson
 Carol and Jeff Waymack
 Amber C. Webb
 Jacob M. Wehmann
 Kathleen Wehmann
 William J. Weide

John E. Welch
 Kimbra C. Metz
 Nadezhda Welter
 Erik Westover
 Jesse Douglas Wetter
 Kevin B. Whang
 Katharyne D. White
 Drew Y. Whitten
 Neva E. Wiederspohn
 Michael Wien
 William A. Wien
 Deborah and Fred Wilds
 Christopher Wille
 Lindsey Wille
 Joana Willingham
 Brittany Wilson
 John Downs and Kimberly
 Wilson
 Mark Windschitl and Pamela
 Joseph
 Maya Wine
 William and Shirley
 Wiselogle
 David Wisler
 Grant and Tina Wong
 Koper and Clara Wong
 Sungna Woo
 Alan and Wei-Ping Wood
 Woodinville Pediatric Dentistry
 Woodlawn Optical
 Workforce Development
 Council Snohomish
 County
 Justina C. Wu
 Jo Anne Wyatt
 Tesfaye Yadeta
 Erica Yamamura
 Jenny T. Yee
 Won Sin Yi
 Sandra E. Yon
 Barbie Young
 Michele L. Young
 Paul S. Young
 Ying Z. Yu
 Michael and Katrina Zachacz
 Nesreen Zadah
 Sarah Zale
 Carol Zander
 Carl Zapora and Cheryl Foster
 Lisa L. Zerby
 Lee-Michael Zerrilla
 Yuhua Zhong
 Ellis Z. Zhuang
 Milad Zolfaghari

▶ UW BOTHELL ENDOWMENTS

Douglas M. and Barbara J. Allan
 Endowed Student Support Fund

Warren W. Buck Endowed
 Scholarship for Undergraduate
 Students

Kenyon Chan and Shirley Hune
 Endowed Student Support Fund

Hung Dang and Odette Austria
 Endowed Student Emergency
 Support Fund

Natalie K. Lang International
 Student Scholarship

Richard and Anne Penny
 Endowed Student Support Fund

Ethel Jenisch Rose Endowment

Don Whitney MBA Scholarship

Richard C. & Lois M. Worthington
 Distinguished Teaching Awards

Richard C. & Lois M. Worthington
 Endowed Scholarship

Richard and Lois Worthington
 Foundation Endowment for
 Excellence in Technology

University of Washington Bothell
 Alumni Scholarship Endowment

University of Washington Bothell
 Chancellor's Endowment Fund

University of Washington Bothell
 Computing & Software Systems
 Endowed Fund

University of Washington Bothell
 Founder's Endowed Fellowship

University of Washington
 Bothell Masters of
 Management/MBA Faculty
 Development Endowed Fund

Every effort has been made to include names of all donors and to provide the correct spelling of all names. If there is an error in your name or the name of your company, please contact the Office of Advancement at (425) 352-3642 or email advancement@uwb.edu so we may make the appropriate corrections.

W UNIVERSITY of WASHINGTON | BOTHELL

www.uwb.edu

18115 Campus Way NE, Bothell, WA 98011-8246